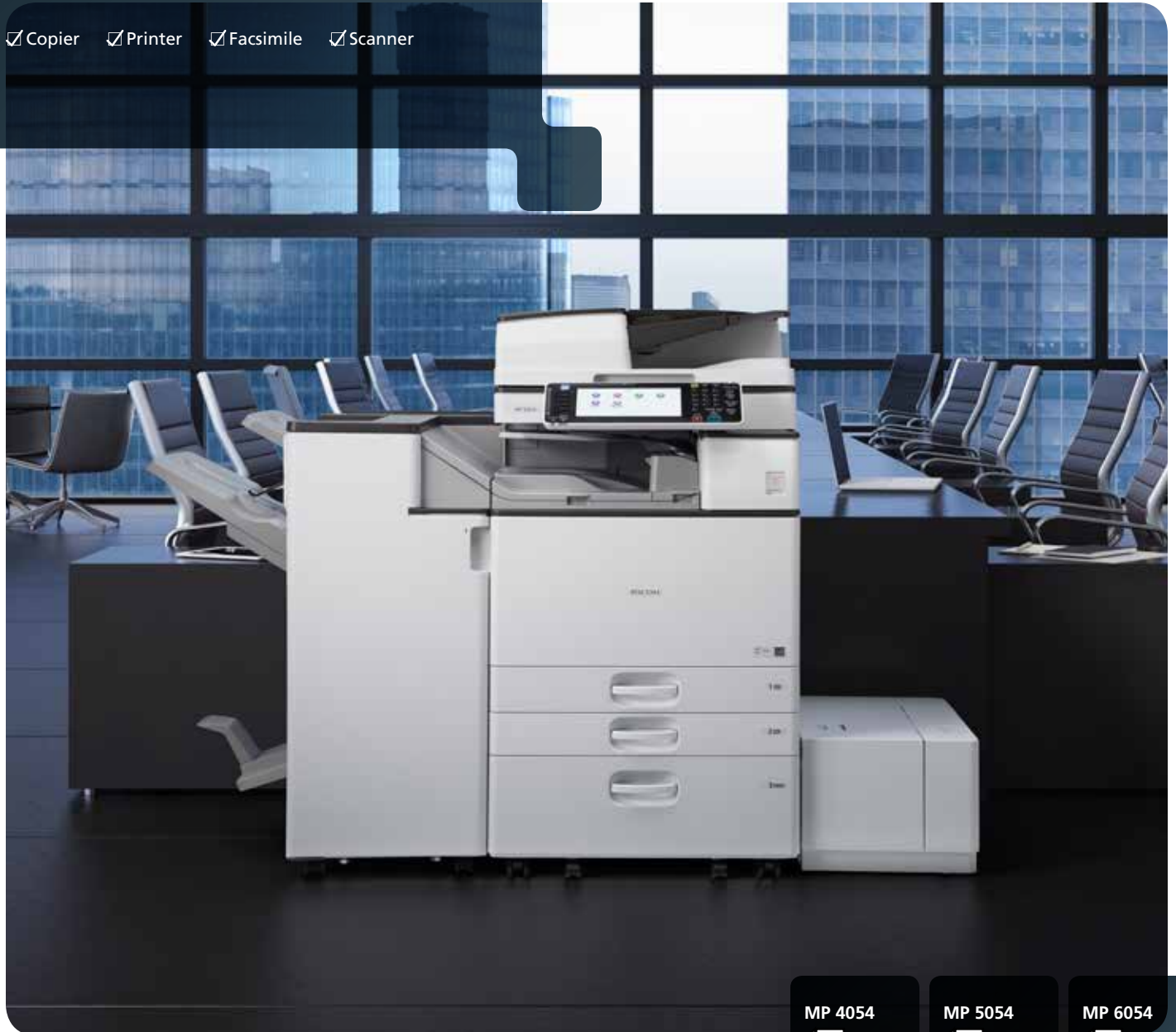


Multifunction B&W

RICOH MP 4054/MP 5054/ MP 6054

✓ Copier ✓ Printer ✓ Facsimile ✓ Scanner



MP 4054

40
ppm monochrome

MP 5054

50
ppm monochrome

MP 6054

60
ppm monochrome

RICOH
imagine. change.

Manage information — and new opportunities — effortlessly

You're the expert. But what good is having all that information if you can't share it with anybody? With the RICOH® MP 4054/MP 5054/MP 6054, you can produce and share your best ideas with more people in more locations. Whether you need to print important documents and fax them to a client, scan an invoice to your mailbox or simply copy notes from a morning meeting, you can move information quickly and intuitively from this multifunction device. Create shortcuts for frequent tasks to save time. Use your smartphone to print documents whether you're at your desk, down the hall or out of the office. Take advantage of user authentication tools to ensure key information gets to the right people. You can even monitor user activity and energy consumption remotely, so you know if you're making the right decisions along the way.

- Print up to 60 black-and-white prints/copies per minute
- Use mobile printing to produce documents from anywhere
- Perform more everyday tasks using less space
- Protect documents and intellectual property with user authentication
- Minimize operating costs with energy-saving features



Perform ordinary tasks with extraordinary precision

Improve the way you manage information

Work faster, make better decisions

How quickly can you get information in the hands of those who need it the most? Use the Ricoh MP 4054/MP 5054/MP 6054 to transition from one job to the next with ease. With recovery from sleep mode in only 4.9 seconds, you can start moving information almost as soon as you think of it. Use the intuitive, one-touch controls to produce up to 60 black-and-white pages per minute on a wide range of media. Convert paper documents into digital format for faster retrieval and distribution with the standard 220-Sheet Single Pass Document Feeder (SPDF), which scans up to 180 color or black-and-white images per minute. You can also use the optional OCR scanning feature to create PDF files that can be accessed simply by searching for key words in the document.



Work from more locations

You never know where your workday will take you. Be ready for anything — from anywhere. Print directly to the Ricoh MP 4054/MP 5054/MP 6054 using Ricoh HotSpot Enterprise. Use your smartphone to connect to the MFP and print network documents at your convenience and save yourself a long trek back to your desk. You can also bring your work with you via a USB drive or SD card. Simply plug it into the networked MFP and print or scan documents right from the device. With the Ricoh Smart Device Connector app, you can copy, print, scan and fax directly from your smart device. Simply touch your smart device to the NFC tag on the optional Smart Operation Panel or scan the QR Code to automatically connect to the MFP and access these functions.



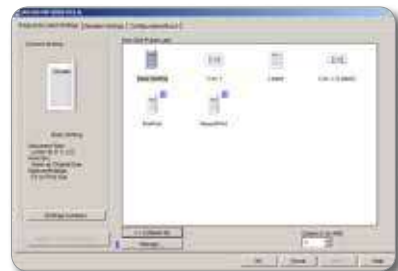
Minimize steps, maximize productivity

Nobody knows your job better than you do — so you know how to make it better. With the Ricoh MP 4054/MP 5054/MP 6054, you can customize workflows to simplify how you work. Use icons on the Home Screen as shortcuts to frequently used tasks and skip repetitive steps with a single touch. Take advantage of embedded software like Ricoh GlobalScan® NX to scan and convert paper documents to digital files quickly so you gain easier access to important information across the enterprise. Add other third-party vendor solutions to simplify content management and other business-critical tasks so you can work with fewer manual touchpoints and minimize errors.



Impress with high-quality documents

Capture the attention of your audience with a wider range of professional-looking documents. It's easy with the icon-driven, preset PCL6 interface driver. With a single click, you can produce eye-catching black-and-white documents at up to 1200 dpi. Print on more types of stocks, including thicker paper, sizes up to 11" x 17" and even envelopes from the standard tray. Plus, you can choose between several automated finishers for end-to-end document production with incredible quality in fewer steps.



Simplify your workday with a wider range of capabilities

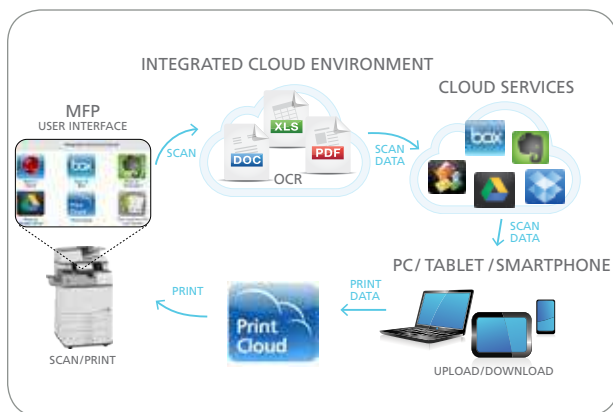
Access key functions conveniently

You use your smartphone or tablet every day because it's convenient and keeps you connected. Now you can say the same about the MFP in your office. With the Ricoh MP 4054/MP 5054/MP 6054, you can simplify routine actions like printing, copying, scanning and faxing with the same intuitive drag-and-drop, pinch-and-flick and swipe scrolling you use on your personal devices. Navigate between key functions with ease via the optional 10.1" Wide Super VGA Smart Operation Panel. You'll have fewer steps, so you can access and share information in only moments.



Move information in more ways, from more places

You have enough to do. Let us handle some of it for you. After all, our legacy includes finding fast, affordable ways to automate routine tasks to simplify the way you work. Need to grab an important document to share with an offsite client? Want to share newly captured information with people who may be away from the office? Use the optional Ricoh Integrated Cloud Environment (ICE) solution to manage information in the Cloud — and be spared expensive servers, equipment and maintenance. Visitors to your office can have the same convenience. They can send emails with attachments directly to the MFP for fast, easy printing without downloading print drivers.



Protect what's most important

You have something in high demand — information. It's important that you protect it to ensure it gets to the right people. With the Ricoh MP 4054/MP 5054/MP 6054, you can store documents at the device for safekeeping. Release them by swiping an authorized ID card at the optional card reader or by entering a passcode on the control panel. Add watermarks to documents and mask copy when unauthorized users try to duplicate them. You can also use PDF encryption to scramble data on confidential PDFs to keep information safe. Worried about information you leave behind? With the DataOverwriteSecurity System (DOSS), images and data on the hard drive are rendered unreadable automatically.



Discover an easier way to handle more types of jobs

Improve collaboration with digital delivery

You can't predict when you're going to get a great idea. But you can know exactly when the next person gets it. Send important information — including black-and-white or color images and documents — in PDF, TIFF or JPEG formats via Scan-to-File/Folder/URL/FTP/Email without wasting paper or time. You can compress larger or more complex graphics files and send them just as easily without compromising quality. When you need to send contracts, invoices or other paper documents, use Internet Faxing, LAN Faxing or IP Fax for fast delivery. You can even use the Ricoh MP 4054/MP 5054/MP 6054 as a conduit for remote faxing and minimize the need for additional phone lines and fax boards.



Expedite everyday tasks

You're facing enough challenges. Your office MFP shouldn't be your next one. On other systems, a single paper jam can derail productivity for an entire workgroup before the problem is even discovered. With the Ricoh MP 4054/MP 5054/MP 6054, you only need to follow the on-screen animation and LED guide (inside the MFP) and you can trace the source of the problem in moments. Reloading paper is just as easy. Expand capacity to 4,700 sheets with optional paper trays and print for extended runs without interruptions. In addition, you can automate meter reads, access system settings, streamline firmware updates and more — all from the convenience of your desktop — so you can spend more time on core, revenue-generating tasks.



Conserve energy to reduce operating costs

You'll find just the opposite to be true with the Ricoh MP 4054/MP 5054/MP 6054. It offers low cost-per-page and best-in-class typical electricity consumption (TEC) values so you can reduce costs while meeting your sustainability goals. With a shorter recovery time of less than 5 seconds from sleep mode, the Ricoh MP 4054/MP 5054/MP 6054 keeps up with today's fast-paced business environment. You can program the device to power on or off during specified times to conserve energy for even greater savings. Plus, the device meets EPEAT® Gold* criteria — a global environmental rating system for electronic products — and is certified with the latest ENERGY STAR™ specifications.



Eco-Friendly Indicator Screen as shown on the Smart Operation Panel.

*EPEAT Gold rating is applicable only in the USA.

Streamline document management tasks in small offices and workgroups



Ricoh MP 6054 shown with optional One-Bin Tray, 2,000-Sheet Tandem Large Capacity Tray, 1,500-Sheet Side Large Capacity Tray and 3,000-Sheet Stapler Finisher.

- 1 Navigate from job to job easily via the standard, full-color, 9" tiltable LCD control panel featuring a USB/SD card slot and a customizable home screen to link to commonly performed jobs.
- 2 Handle one- and two-sided originals for copying, scanning and faxing efficiently from the standard 220-Sheet Single Pass Document Feeder (SPDF).
- 3 Extend print runs and minimize interruptions with standard 2 x 550-Sheet Paper Trays.
- 4 Accommodate a wide range of paper sizes and types, including poster printing, via the standard 100-Sheet Bypass Tray.
- 5 Use the optional 2,000-Sheet Tandem Large Capacity Tray (shown) to produce large quantities of letter size documents. Other options include a 1 x 550-Sheet Paper Tray, 2 x 550-Sheet Paper Tray, 1,500-Sheet Side Large Capacity Tray (shown) and Cabinet Type F.
- 6 Produce professional documents and minimize outsourcing. The optional 3,000-Sheet Stapler Finisher (shown) accommodates up to 50-sheet document sets with a choice of three single staple positions or a double staple. An optional 2/3-Hole Punch Unit installs inside the finisher. Design your own complete document production solution with other optional finishers, including a 500-Sheet Internal Finisher, 1,000-Sheet Stapler Finisher, 1,000-Sheet Booklet Finisher, and a 2,000-Sheet Booklet Finisher.
- 7 Separate output and simplify document retrieval with an optional 125-Sheet One-Bin Tray (shown) and 250-Sheet Internal Shift-Sort Tray.

Spread your message with professional finished output

You've come up with a great idea. But, you're not finished yet. You have to present it so your audience feels compelled to do something with it. With the Ricoh MP 4054/MP 5054/MP 6054, you have a choice of finishers to add a polished, more professional look to your presentations. Each finisher automates cumbersome manual tasks to improve consistency and minimize manual errors — while letting you concentrate on your next big idea.



Finisher	Paper Capacity	Hole-Punch	Saddle Stitch	Supported Systems
SR3130 Internal Finisher	500 Sheets	Optional	N/A	MP 4054/MP 5054
SR3140 Stapler Finisher	1,000 Sheets	Optional	N/A	All
SR3160 Stapler Finisher	3,000 Sheets	Optional	N/A	All
SR3150 Booklet Finisher	1,000 Sheets	Optional	✓	All
SR3170 Booklet Finisher	2,000 Sheets	Optional	✓	All

Engine/Copier Specifications

Scanning Element	One-Dimensional Solid Scanning Through CCD
Printing Process	Twin Laser Beam Scanning & Electrophotographic Printing
Toner Type	Dry, dual component
Copy Resolution	600 x 600 dpi
Maximum Copy Quantity	Up to 999
First Page Out Time	4 Seconds for MP 4054 2.9 Seconds for MP 5054/MP 6054
Warm-Up Time	14 seconds with Standard Operation Panel
Recovery Time From Sleep Mode	4.9 seconds
Memory (Standard/Maximum)	2 GB RAM + 320 GB HDD (Shared)
Original Type	Book/Sheet/Object
Maximum Original Size	Up to 11" x 17"
B&W Print Speed (Letter/A4)	MP 4054: 40 prints/minute MP 5054: 50 prints/minute MP 6054: 60 prints/minute
Power Source	120V/60Hz/12A
Typical Electricity Consumption (TEC)**	MP 4054: 1.5 kWh/week MP 5054: 2.2 kWh/week MP 6054: 2.6 kWh/week
Standard Paper Capacity	1,200 sheets (550 sheets x 2 trays, and 100-Sheet Bypass Tray)
Maximum Paper Capacity	4,700 sheets (w/Tandem LCT + Side LCT)
Supported Paper Types	Plain Paper, Transparencies*, Letterhead, Color Paper, Pre-Punched Paper, Labels*, Envelopes, Cardstock, Recycled, Preprinted Paper, Bond Paper
Supported Paper Sizes	Bypass Tray: 5.5" x 8.5" – 12" x 18" (A6 – A3) Tray 1 & 2: 5.5" x 8.5" – 11" x 17" (A6 – A3)

Supported Paper Weights	Duplex: 14 – 68 lb. Bond (52 – 256 g/m ²) Bypass: 14 – 80 lb. Bond (52 – 300 g/m ²) Tray 1 & 2: 16 – 80 lb. Bond (60 – 300 g/m ²)
Standard Output Capacity	500 sheets
Maximum Output Capacity	3,625 sheets (Bridge Unit + 1 Bin + 3,000-Sheet Finisher)
Document Feeder Type	Single Pass Document Feeder (SPDF)
Document Feeder Original Size	5.5" x 8.5" – 11" x 17" (A5 – A3)
Document Feeder Paper Weight	Simplex: 11 – 34 lb. Bond (40 – 128 g/m ²) Duplex: 14 – 34 lb. Bond (52 – 128 g/m ²)
Document Feeder Capacity	220 sheets
Preset Reduction & Enlargement Ratios	25%, 50%, 65%, 73%, 78%, 85%, 93%, 100%, 121%, 129%, 155%, 200%, 400%
Zoom Range	25% to 400% in 1% increments
Standard Features	Auto Paper Select, Auto Tray Switch, Booklet/Magazine Copy, Center/Border Erase, Chapters, Combine Mode, Cover Insertion, Document Server (3,000 File Capacity), Duplex, Electronic/Rotate Sorting, Full-Color VGA Touch Screen Control Panel, ID Card Copy, 8 Job Presets, 25 Job Programs, Negative/Positive, OHP Slip Sheet, Sample Copy, Series Copy, Simple Screen, 1,000 User Codes, User Stamps
Dimensions (WxDxH) (includes SPDF)	23.1" x 26.8" x 37.9"
Weight	(587 x 680 x 963 mm) 163.1 lbs., 74 kg

*Bypass Tray only
**Typical electricity consumption by ENERGY STAR program

Print Specifications (Standard)

Processor Speed	533MHz
Connection Type	Standard: 10Base-T/100/1000BaseTX Ethernet, USB2.0 Type A (2 ports on back of device, 1 port on Operation Panel), SD slot on Operation Panel, USB2.0 Type B Optional: IEEE 802.11a/b/g/n Wireless LAN, USB Device Server (second NIC), & IEEE 1284 Parallel
Network Protocols	TCP/IP (IPv4, IPv6), IPX/SPX*
Supported Operating Systems	Windows Vista/7/8/XP, Windows Server 2003/2003R2/2008/2008R2/2012/2012R2; Netware* 6.5 or later, Unix Filters for Sun Solaris, HP-UX, SCO OpenServer, Red Hat Linux, IBM AIX, Mac OS X 10.6 or later, SAP R/3, NDPS Gateway, IBM iSeries/AS/400* using OS/400 Host Print Transform, Citrix Presentation Server 4.5/Citrix Xen App 5.0, 6.0, 6.5
Device Management Utilities	Web Image Monitor, Embedded @Remote, @Remote Office Appliance, @Remote Enterprise Pro, Device Manager NX Lite and Accounting, Device Manager NX Pro and Enterprise, @Remote Connector NX
Printer Languages	Standard: PCL5e/6, Optional: Adobe PostScript 3*, IPDS & XPS
Print Resolution	Up to 1200 x 1200 dpi
Font Support	PCL5e/6: 45 Scalable Fonts, 13 International Fonts PS3: 136 Roman Fonts (optional) IPDS: 108 Roman Fonts (optional) Sample/Locked/Hold/Stored Print
Standard Features	*Requires optional SD Card for Netware

Ricoh MP 4054/MP 5054/MP 6054

SYSTEM SPECIFICATIONS

Scan Specifications (Standard)

Scan Speed (B&W & Full Color)	110 ipm Simplex/180 ipm Duplex (Letter, A4)
Scan Resolution	Color & B/W: Up to 600 dpi TWIN: Up to 1200 dpi
Platen Size	Up to 11" x 17"
Connection Type	Standard: 10Base-T/100/1000BaseTX Ethernet Optional: IEEE 802.11a/b/g/n Wireless LAN TCP/IP, NCP*, SMB, SMTP, POP, FTP, IMAP4
Protocol	Single and Multi-Page TIFF/PDF, High-Compression PDF, PDF/A and Single-Page JPEG
File Formats	Embedded Scan-to-Email/Folder/URL, Scan-to-USB/SD, TWIN and Color Scanning

*Requires optional SD Card for Network

Fax Specifications (Option)

Fax Option Type M12

Circuit	PSTN, PBX
Compatibility	ITU-T G3
Resolution	200 x 200/100 dpi 400 x 400 dpi (optional)
Compression Method	MH, MR, MMR, JBIG
Scanning Speed (LEF)	Up to 68 spm (Letter/A4)
Modem Speed	33.6 Kbps with auto fallback
Transmission Speed	G3: 3 seconds per page (MMR Compression) G3: 2 seconds per page (JBIG Compression)
SAF Memory	4 MB standard/60 MB maximum 320 pages/4,800 pages
Max Auto Dials	2,000
Group Dials	100 (max. 500 numbers per group)
Standard Features	Dual Access, Duplex Reception, Image Rotation, 1 Hour Backup, LAN-Fax Capability, Internet Faxing (T.37), IP Faxing (T.38), Fax Forwarding to E-Mail/HDD/Folder Simultaneous Operation of up to 3 lines (G3 x 3)
Optional Features	

Security Features (Standard)

DOSS, HDD Encryption, S/MIME, IPsec Communication, Locked
Print Password Encryption, Address Book Encryption, SSL, User
Authentication, Quota Setting/Account Limit, SNMP v3, SMTP
over SSL and PDF encryption

Optional Hardware Accessories

Paper Handling & Cabinet Options

One-Tray Paper Bank (PB3150)^{1,5}	
Paper Capacity	550 sheets x 1 tray
Supported Paper Sizes	5.5" x 8.5" to 11" x 17" (A5 – A3)
Supported Paper Weight	16 – 80 lb. Bond/166 lb. Index (60 – 300 g/m ²)
Dimensions (WxDxH)	23.1" x 27" x 4.7" (587 x 685 x 120 mm)
Two-Tray Paper Bank (PB3220)¹	
Paper Capacity	1,100 sheets (550 sheets x 2 trays)
Supported Paper Sizes	5.5" x 8.5" to 11" x 17" (A5 – A3)
Supported Paper Weight	16 – 80 lb. Bond/166 lb. Index (60 – 300 g/m ²)
Dimensions (WxDxH)	23.1" x 27" x 9.7" (587 x 685 x 247 mm)
Tandem Large Capacity Tray (PB3230)¹	
Paper Capacity	2,000 sheets (1,000 sheets x 2)
Supported Paper Sizes	8.5" x 11" (A4)
Supported Paper Weight	16 – 80 lb. Bond/166 lb. Index (60 – 300 g/m ²)
Dimensions (WxDxH)	23.1" x 27" x 9.7" (587 x 685 x 247 mm)
Side Large Capacity Tray (RT3030)⁴	
Paper Capacity	1,500 sheets
Supported Paper Sizes	8.5" x 11" (A4)
Supported Paper Weight	16 – 80 lb. Bond/166 lb. Index (60 – 300 g/m ²)
Dimensions (WxDxH)	13.4" x 21.4" x 11.4" (340 x 545 x 290 mm)
Cabinet Type F¹	
Dimensions (WxDxH)	23.1" x 26.7" x 10" (586 x 679 x 256 mm)
Weight	Less than 29.3 lbs. (13.25 kg)

Output Trays & Finisher Options

Internal Shift-Sort Tray (SH3070)²	
Paper Capacity	250 sheets (8.5" x 11" or smaller) (A4 – A5) 125 sheets (8.5" x 14" or larger) (B4 – A3)
Supported Paper Sizes	5.5" x 8.5" to 12" x 18" (A6 – A3)
Supported Paper Weight	14 – 80 lb. Bond/166 lb. Index (52 – 300 g/m ²)
Bin Tray (BN3110)	
Supported Paper Sizes	5.5" x 8.5" to 11" x 17" (A6 – A3)
Supported Paper Weight	14 – 80 lb. Bond/166 lb. Index (52 – 300 g/m ²)
Paper Capacity	125 sheets
500-Sheet Internal Finisher (SR3130)^{2,6}	
Supported Paper Sizes	5.5" x 8.5" – 12" x 18" (A6 – A3)
Supported Paper Weight	14 – 80 lb. Bond/166 lb. Index (52 – 300 g/m ²)
Stack Capacity	500 sheets (8.5" x 11" or smaller) (A4) 250 sheets (8.5" x 14" or larger) (B4 – A3)
Staple Paper Size	8.5" x 11" to 11" x 17" (A4 – A3)
Staple Paper Weight	14 – 28 lb. Bond (52 – 105 g/m ²)
Staple Capacity	50 sheets (8.5" x 11") (A4) 30 sheets (8.5" x 14" or larger, and/or Mixed Sizes) (B4 – A3)
Staple Positions	Top, Bottom, 2 Staples
Dimensions (WxDxH)	21.5" x 20.6" x 6.7" (546 x 523 x 170 mm)
2-/3-Hole Punch Unit (PU3040NA)	
(Optional, Installs inside SR3130 Internal Finisher)	
1,000-Sheet Finisher (SR3140)^{2,3,4}	
Supported Paper Sizes	Proof Tray: 5.5" x 8.5" – 11" x 17" (A6 – A3) Shift Tray: 5.5" x 8.5" – 11" x 17" (A6 – A3)
Supported Paper Weight	Proof Tray: 14 – 45 lb. Bond/93 lb. Index (52 – 169 g/m ²) Shift Tray: 14 – 80 lb. Bond/166 lb. Index (52 – 300 g/m ²)
Stack Capacity	Proof Tray: 250 sheets (8.5" x 11") (A4) 50 sheets (8.5" x 14" or larger) (B4) Shift Tray: 1,000 sheets (8.5" x 11") (A4) 500 sheets (8.5" x 14" or larger) (B4) 50 sheets (8.5" x 11") (A4) 30 sheets (8.5" x 14" or larger) (B4)
Staple Capacity	8.5" x 11" – 11" x 17" (A4 – A3) 30 sheets (8.5" x 14" or larger) (B4)
Staple Paper Size	14 – 28 lb. Bond (52 – 105 g/m ²)
Staple Paper Weight	14 – 28 lb. Bond (52 – 105 g/m ²)
Staple Positions	Top, Bottom 2 Staples
Dimensions (WxDxH)	22.2" x 24.4" x 37.8" (563 x 620 x 960 mm)
1,000-Sheet Booklet Finisher (SR3150)^{2,3,4}	
Supported Paper Sizes	Proof Tray: 5.5" x 8.5" – 11" x 17" (A6 – A3) Shift Tray: 5.5" x 8.5" – 11" x 17" (A6 – A3) Booklet Tray: 8.5" x 11" – 11" x 17" (A4 – A3)
Supported Paper Weight	Proof Tray: 14 – 45 lb. Bond (52 – 169 g/m ²) Shift Tray: 14 – 80 lb. Bond/166 lb. Index (52 – 300 g/m ²)
Stack Capacity	Booklet Tray: 14 – 28 lb. Bond (52 – 105 g/m ²) Proof Tray: 250 sheets (8.5" x 11" or smaller) (A4) 50 sheets (8.5" x 14" or larger) (B4 – A3) Shift Tray: 1,000 sheets (8.5" x 11" or smaller) (A4) 500 sheets (8.5" x 14" or larger) (B4 – A3) Booklet Tray: 20 Sets (2 – 5 sheets), 10 Sets (6 – 10 sheets) & 7 Sets (11 – 15 sheets)
Staple Capacity	Normal Staple: 50 sheets (8.5" x 11") (A4), 30 sheets (8.5" x 14" or larger) (B4 – A3) Saddle Stitch: 15 sheets
Staple Paper Size	Normal Staple: 8.5" x 11" – 11" x 17" (A4 – A3) Saddle Stitch: 8.5" x 11" – 11" x 17" (A4 – A3)
Staple Paper Weight	14 – 28 lb. Bond (52 – 105 g/m ²)
Staple Positions	Top, Bottom, 2 Staples, Booklet
Dimensions (WxDxH)	22.2" x 24.4" x 37.8" (563 x 620 x 960 mm)
2-/3-Hole Punch Unit (PU3050NA)	
(Optional, Installs inside SR3150 or SR3140 Finishers)	

2,000-Sheet Booklet Finisher (SR3170)^{2,3,4}

Support Paper Sizes	Proof Tray: 5.5" x 8.5" to 12" x 18" (A6 – A3) Shift Tray: 5.5" x 8.5" to 12" x 18" (A6 – A3) Booklet Tray: 8.5" x 11" to 12" x 18" (A4 – A3)
Support Paper Weight	Proof Tray: 14 – 58 lb. Bond (52 – 220 g/m ²) Shift Tray: 14 – 80 lb. Bond/166 lb. Index (52 – 300 g/m ²) Booklet Tray: 17 – 28 lb. Bond (64 – 105 g/m ²)
Stack Capacity	Proof Tray: 250 sheets (8.5" x 11" or smaller) (A4) 50 sheets (8.5" x 14" or larger) (B4) Shift Tray: 2,000 sheets (8.5" x 11" LEF) (A4 LEF) 1,000 sheets (11" x 17" SEF, 8.5" x 13" SEF, 8.5" x 11" SEF, 12" x 18" SEF) (A3 SEF, A4 SEF) 500 sheets (A5 LEF) 100 sheets (5.5" x 8.5" SEF) (A5 SEF, A6 SEF) Booklet Tray: 30 sets (2 – 5 sheets) or 15 sets (6 – 10 sheets) or 10 sets (11 – 15 sheets) or 6 sets (16 – 20 sheets)
Staple Capacity	Normal Staple: 50 sheets (8.5" x 11" to 11" x 17" and Mixed Sizes) (A4 – A3) Saddle Stitch: 20 sheets
Staple Paper Size	Normal Staple: 8.5" x 11" to 11" x 17" (A4 – A3) Saddle Stitch: 8.5" x 11" to 12" x 18" (A4 – A3)
Staple Paper Weight	Normal Staple: 14 – 28 lb. Bond (52 – 105 g/m ²) Saddle Stitch: 17 – 28 lb. Bond (64 – 105 g/m ²)
Staple Positions	Top, Bottom, 2 Staples, Top Slant, Booklet
Dimensions (WxDxH)	25.9" x 24.1" x 37.8" (657 x 613 x 960 mm)
3,000-Sheet Finisher (SR3160)^{2,3,4}	
Support Paper Size	Proof Tray: 5.5" x 8.5" to 12" x 18" (A6 – A3) Shift Tray: 5.5" x 8.5" to 12" x 18" (A6 – A3)
Supported Paper Weight	Proof Tray: 14 – 58 lb. Bond/122 lb. Index (52 – 220 g/m ²) Shift Tray: 14 – 80 lb. Bond/166 lb. Index (52 – 300 g/m ²)
Stack Capacity	Proof Tray: 250 sheets (8.5" x 11" or smaller) (A4) 50 sheets (8.5" x 14" or larger) (B4) Shift Tray: 3,000 sheets (8.5" x 11" LEF) (A4 LEF) 1,500 sheets (11" x 17" SEF, 8.5" x 13" SEF, 8.5" x 11" SEF, 12" x 18" SEF) (A3 SEF, A4 SEF) 500 sheets (A5 LEF) 100 sheets (5.5" x 8.5" SEF) (A5 SEF, A6 SEF) 50 sheets (8.5" x 11" to 11" x 17" or Mixed Sizes) (A4 – A3)
Staple Capacity	8.5" x 11" to 11" x 17" (A4 – A3)
Staple Paper Size	14 – 28 lb. Bond (52 – 105 g/m ²)
Staple Paper Weight	14 – 28 lb. Bond (52 – 105 g/m ²)
Staple Positions	Top, Bottom, 2 Staples, Top Slant
Dimensions (WxDxH)	25.9" x 24.1" x 37.8" (657 x 613 x 960 mm)
2-/3-Hole Punch Unit (PU3060NA)	
(Optional, Installs inside SR3160 or SR3170 Finishers)	

Additional Accessory Options

Bridge Unit BU3070, Browser Unit Type M12, Card Reader Bracket
Type 3352, Copy Data Security Unit Type G, Embedded HotSpot Type S,
Fax Connection Unit Type M12, File Format Converter Type E,
G3 Interface Unit Type M12, IEEE 1284 Interface Board Type A,
IEEE 802.11a/b/g/n Interface Unit Type M2, IPDS Unit Type M12,
Key Counter Bracket Type M3, Memory Unit Type M12 64MB,
OCR Unit Type M2, Optional Counter Interface Unit Type M12,
PostScript3 Unit Type M12, SD Card for NetWare Printing Type M12,
Smart Card Reader Built-in Unit Type M12, Smart Operation Panel
Type M3, XPS Direct Print Option Type M12, USB Device Server
Option Type M12

Note: Some accessories require additional equipment or may be prerequisites
for other options. Some images contained in this brochure do not show the
stabilizers that ship with the optional paper feed units.

Some options may not be available at the time of market release.
Specifications are subject to change without notice.

For maximum performance and yield, we recommend using genuine Ricoh
parts and supplies.

- 1 Cannot be installed together
- 2 Cannot be installed together
- 3 Requires Bridge Unit BU3070
- 4 Requires installation of Two-Tray Paper Bank (PB3220) or Tandem LCT (PB3230)
- 5 Requires installation of Caster Table Type M3
- 6 Cannot be installed on MP 6054

RICOH
imagine. change.

www.ricoh-usa.com

Ricoh Americas Corporation, 70 Valley Stream Parkway, Malvern, PA 19355, 1-800-63-RICOH
Ricoh® and the Ricoh Logo are registered trademarks of Ricoh Company, Ltd. All other trademarks are the property of their respective owners. ©2015 Ricoh Americas Corporation. All rights
reserved. The content of this document, and the appearance, features and specifications of Ricoh products and services are subject to change from time to time without notice. Products are
shown with optional features. While care has been taken to ensure the accuracy of this information, Ricoh makes no representation or warranties about the accuracy, completeness or adequacy
of the information contained herein, and shall not be liable for any errors or omissions in these materials. Actual results will vary depending upon use of the products and services, and the
conditions and factors affecting performance. The only warranties for Ricoh products and services are as set forth in the express warranty statements accompanying them.

R3533

