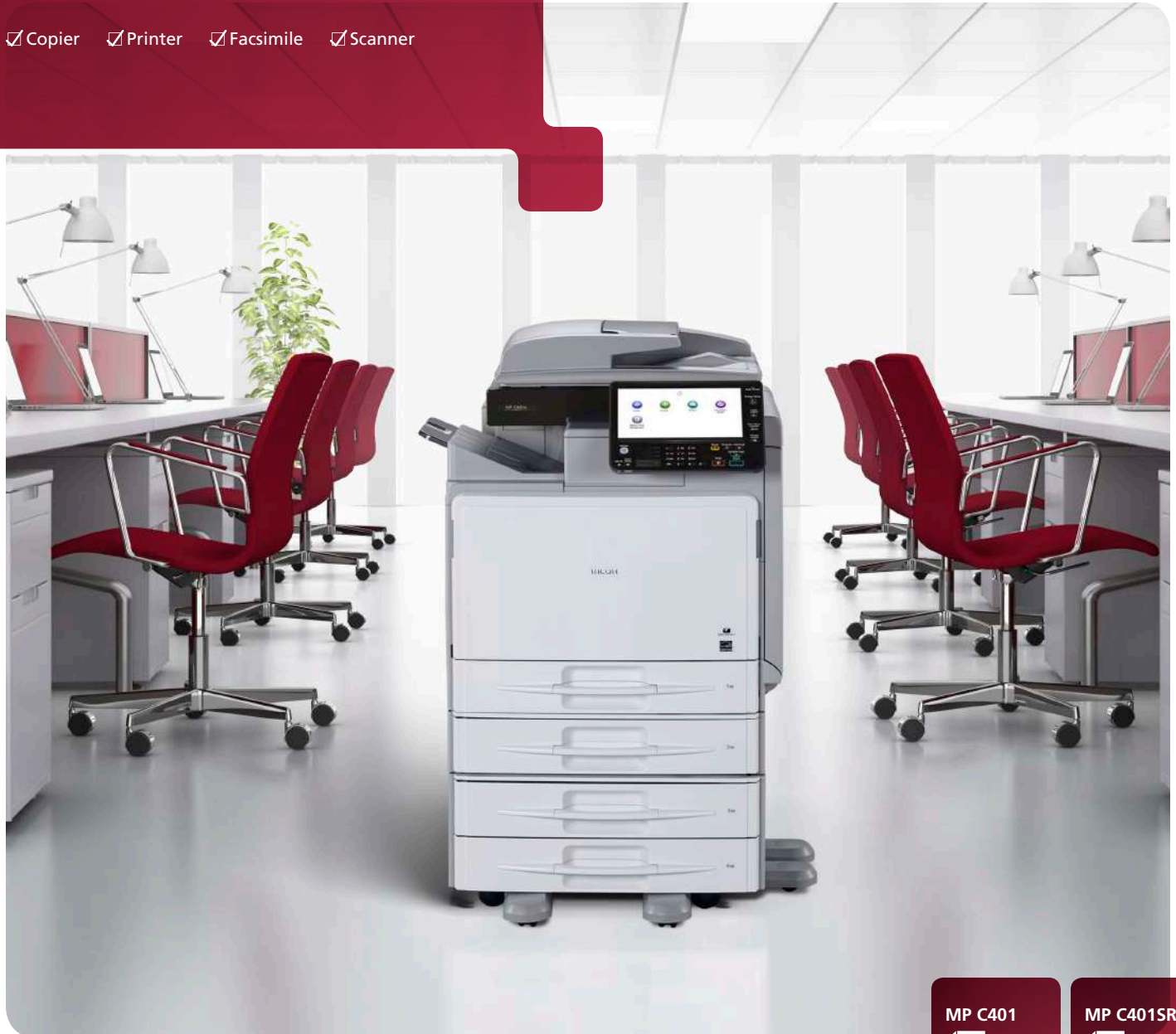


Multifunction Color

RICOH MP C401 MP C401SR

✓ Copier ✓ Printer ✓ Facsimile ✓ Scanner



RICOH
imagine. change.

MP C401

42
ppm
monochrome
and full-color

MP C401SR

42
ppm
monochrome
and full-color

Faster, smarter workflow for your workgroup

You know your team better than anybody. You know what drives them and what they need to be more productive. You also know your budget. Wouldn't it be great if there was an easy-to-use device to give them the performance they need — at the price you want? Introducing the RICOH® MP C401/MP C401SR, a powerful digital multifunction device that combines fast color output, advanced scanning, optional faxing and dependable security to simplify everyday tasks. This compact, affordable MFP offers a host of customizable features and user-friendly controls, so you can tailor it for your office, workgroup and workflows. Use it as your workhorse device, or add it as part of your Ricoh Managed Document Services (MDS) strategy to improve efficiency throughout your organization.

- Produce up to 42 prints (Letter) and 40 prints (A4) per minute in full color
- Scan documents in color to multiple destinations and reduce paper storage
- Customize the control panel home screen for every user
- Minimize interruptions with a 2,300-sheet paper capacity
- Protect critical information and documents with user authentication
- Add browser support for mobile printing and Cloud services
- Create professional-looking document sets in house (standard finishing available on MP C401SR only)



Discover the value of reliable, efficient everyday performance

Designed to give you more control

Perform more tasks in less time

Thriving organizations move quickly. Are you using technology that can keep pace? The Ricoh MP C401/MP C401SR offers a wide range of features so you can copy, print, store and share documents and move on to the next project within moments. It produces up to 42 color or black-and-white pages per minute for 8.5" x 11" output and up to 32 ppm for 8.5" x 14" — on a wide range of media types. It stores up to 2,300 sheets for fewer workflow interruptions.



Choose how you want to work

Few people work the same way. But everybody can be productive. That's why we created the Ricoh MP C401/MP C401SR to be customizable to your preferences. It comes standard with a 9" tilting color home screen. Individual users can program up to 72 intuitive icons and shortcuts to frequently used tasks. The MP C401SR comes standard with an internal finisher for stapling multi-page print jobs. In addition, a fax option can be added that can transfer documents quickly and economically with or without paper.



Leverage cutting-edge technology

Smartphones, tablets and other mobile devices have become part of the workday experience. So, we engineered the Ricoh MP C401/MP C401SR with the same functionality to enhance your user experience. The optional 10.1" Wide Super VGA Smart Operation Panel features drag-and-drop, pinch-and-flick functionality and swipe scrolling so users can transition from task to task with incredible ease and convenience. It includes iconic widgets for quick updates on the date, time and toner levels.



Be productive on the move

Ricoh lets you accomplish more in the office — even when you're far away from it. The MP C401/MP C401SR offers an embedded Web Browser option, so users can connect directly to the Ricoh Integrated Cloud Environment (ICE) option. Use it to scan documents, send files to popular Web services and print from almost anywhere with the touch of a button. You can turn services on or off based on your needs. Best of all, you use it without an on-premise software investment. The device also lets users carry their work with them. Simply use the convenient USB or SD card slot on the control panel to access your job in walk-up environments.





Exceptional workgroup efficiency at your fingertips

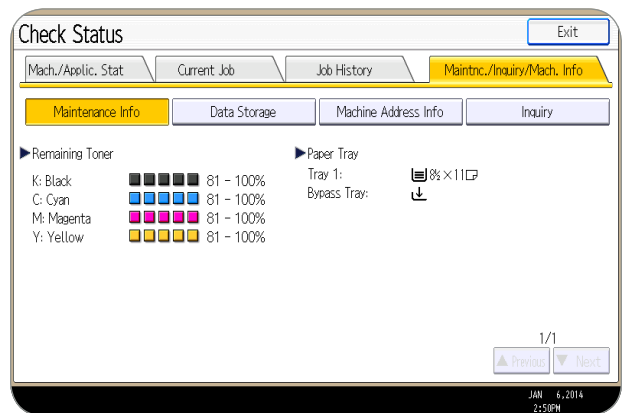
Scan and share documents with ease

Reduce time while using less paper. Use the Ricoh MP C401/MP C401SR to scan color or monochrome originals to shared folders, PC media cards, document servers and other locations. Expedite multi-page scans with the convenient, user-friendly, 50-Sheet Automatic Reversing Document Feeder (ARDF). In addition, you can create searchable PDF files by using the optional OCR scanning feature.



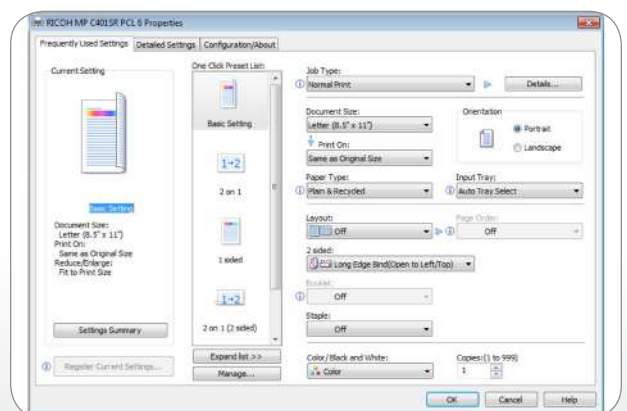
Manage the efficiency of your workgroup

Take advantage of a host of administrative tools to manage system settings, print job status and supply levels from a centralized location. IT Administrators can capture an image of the operation panel screen from their desktop via a new remote user interface, resulting in faster troubleshooting and improved responsiveness. Build custom applications or integrate off-the-shelf software products. Track and control output costs and streamline document capture processes through integration with our best-in-class software solutions. Optimize system performance with remote firmware upgrades. And stay one step ahead by requesting an e-mail alert when supplies are low or an error is detected.



Add power seamlessly to any network

The Ricoh MP C401/MP C401SR fits in almost anywhere. It can be integrated in Windows®, Macintosh®, Citrix®, SAP® and UNIX® environments and comes standard with a Gigabit Ethernet interface. It installs quickly, with minimal investment, for maximum uptime. Choose the icon-driven, one-click preset PCL6 user interface driver or standard Adobe® PostScript®3™ driver to simplify print job setup.



Secure workflows to improve performance

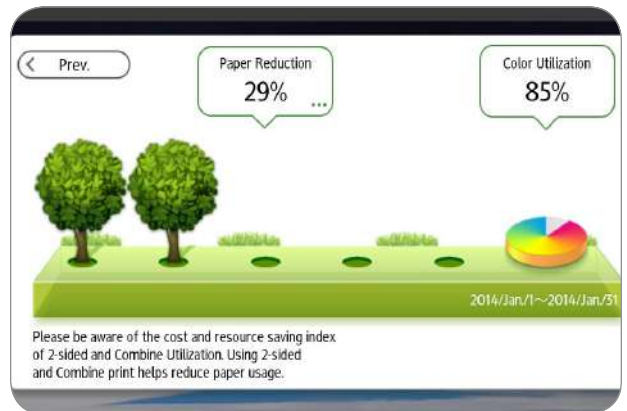
Streamline everyday tasks

Do you want to accomplish tasks faster? Do you want to become more productive? Enjoy convenient automated features to enhance workgroup productivity. With Auto Job Promotion, jobs that are ready to print are automatically moved higher in the print queue, replacing jobs that are stopped for errors or other reasons. ID Card Copy enables users to copy and scan two-sided documents such as identity cards on one side of a sheet of paper. Up to 3,000 documents can be stored and organized on the document server for fast retrieval. In addition, toner can be replaced in moments by any user.



Protect the environment and your bottom line

We strive to be stewards for the environment. That's why we give you more ways to take responsibility for your own energy and paper use. The Ricoh MP C401/MP C401SR offers expanded energy-saving modes to reduce power consumption. Program it to shut down or power up automatically to conserve energy during expected downtimes. Take advantage of standard duplexing to reduce paper and associated costs. Set print quotas for individual users or groups to reduce unnecessary printing. And, use the built-in Eco-Friendly Indicator to see how much paper your team is saving. These models meet the new stringent standards for ENERGY STAR™ 2.0 certification and have qualified for an EPEAT® gold rating.



Eco-Friendly Indicator Screen as shown on Smart Operation Panel.

Secure documents and critical information

Documents need to be protected — so do the people who create them. Control access to specific functions with password-protected user-specific authentication. Take advantage of enhanced encryption to protect your address book, authentication information and stored documents. Destroy all latent images and stored data on the hard disk drive with the DataOverwriteSecurity System (DOSS) feature. Plus, you can print the name, time and login of the authorized user directly on output using the new Mandatory Security Information Printing feature for even more accountability in the office.





Fully-featured for a full day's work



Ricoh MP C401SR finisher model shown with optional 550-Sheet x 2 Paper Trays, optional 550-Sheet Paper Tray and optional Side Tray



1 Standard 50-Sheet Automatic Reversing Document Feeder: Efficiently handle one- and two-sided originals up to 8.5" x 14" in size.

2 One-Bin Tray (Optional for MP C401 only): Separate output and make it easy for users to retrieve their documents.

3 Automatic Duplexing (Standard): Save paper and filing space with standard automatic duplexing that runs virtually at the same speed as one-sided output.

4 Internal Finisher (Standard on MP C401SR only): Produce superb quality finished documents and save space with an innovative internal finisher design.

5 Side Tray (Optional): Keep output well-organized and easily accessible for end-users.

6 Standard Scan-to/Print-from Media: Make high-quality prints from PDF, TIF, JPEG — or print XPS files using the new XPS Direct Print option — or scan documents to a USB clip drive or SD card.



7 Full-Color LCD Control Panel with USB/SD Slot: Navigate from job to job easily with fingertip control via the intuitive, angled 9.0" control panel featuring a user-friendly slot for USB/SD cards.

8 Standard 550-Sheet Paper Tray: Stay productive and minimize trips to replenish paper with an ample supply of 8.5" x 11"/A4 paper, up to 120 lb. Index.

9 Standard 100-Sheet Bypass Tray: Take advantage of a wide range of paper sizes and types (up to 140 lb. Index).

10 550-Sheet Paper Tray (Optional): Accommodate sizes up to 8.5" x 14" and increase paper capacity to 1,200 sheets.

11 550-Sheet x 2 Paper Trays (Optional): Add two additional 550-Sheet Paper Trays to the optional 550-Sheet Paper Tray and offer users an even wider selection of paper types and sizes on demand as well as a robust 2,300-sheet paper capacity.



12 Easy Maintenance: Toner Cartridges are conveniently located behind the front panel. Supplies are easy for any user to replace.

Ricoh MP C401/MP C401SR

SYSTEM SPECIFICATIONS

General Specifications

Printing Process	Dry Electrostatic Transfer with Dual Component Magnetic Brush Development; 4-Drum Method
Scanning Element	Full-Color, One-Dimensional Solid Scanning via CCD
Output Speed (Copy/Print)	42 ppm (Letter), 40 ppm (A4)
Warm-Up Time	45 seconds with Standard Operation Panel 55 seconds with Smart Operation Panel
First Copy Time (Letter/A4)	6.7 seconds (B&W); 8.3 seconds (Color)
Recovery Time (to Scan)	4.6 seconds
Copy Resolution	600 dpi
Document Feeder (Standard)	Automatic Reversing Document Feeder (ARDF)
Original Capacity	50 sheets
Paper Size Custom	5.5" x 8.5" to 8.5" x 14" (A5 – A4) Up to 49.6" (1260 mm) Simplex only for Banners 14 to 34 lb. Bond (52 – 128 g/m ²)
Paper Weight (Simplex)	17 to 28 lb. Bond (60 – 105 g/m ²)
Paper Weight (Duplex)	17 to 28 lb. Bond (60 – 105 g/m ²)
Exposure Glass Quantity Indicator	8.5" x 11" (216 x 297 mm) 1 – 999
Input Capacity	Standard: 1 x 550 sheets + 100-Sheet Bypass Tray Maximum: 2,300 sheets 500 sheets (MP C401); 250 sheets (MP C401SR)
Output Capacity (Letter/A4)	500 sheets (MP C401); 250 sheets (MP C401SR)
Paper Sizes Standard Tray	5.5" x 8.5" to 8.5" x 11" (A6 – A4)
Bypass Tray	2.76" x 5.0" to 8.5" x 23.6" (70 x 127 mm to 216 x 600 mm)
Paper Weights Standard Tray	14 – 58 lb. Bond/120 lb. Index (52 – 220 g/m ²)
Bypass Tray	14 – 68 lb. Bond/140 lb. Index (52 – 256 g/m ²)
Duplex Unit	16 – 43 lb. Bond/90 lb. Index (60 – 163 g/m ²)
Paper Types	Plain Paper, Special Paper, Thick Paper, Thin Paper, Coated, High-Gloss Coated, Water-Resistant Paper, Labels, Envelopes, Letterhead, Color Paper, Preprinted, OHP* Standard
Auto Duplex Zoom	25% to 400% in 1% increments (Platen); 25% to 200% in 1% increments (ARDF)
Preset Reduction and Enlargement Ratios	155%, 129%, 93%, 78%, 65%
Dimensions (WxDxH)	MP C401: 21.7" x 22.4" x 28" (550 x 570 x 710 mm) (including ARDF and Operation Panel) MP C401SR: 23.8" x 22.4" x 28" (605 x 570 x 710 mm) (including ARDF and Operation Panel)
Weight	< 176.3 lbs (80 kg) MP C401; < 187.3 lbs (85 kg) MP C401SR
Power Requirements	120 – 127V/60Hz/12A
Power Consumption	Less than 1.6 KW (Full System)
Sleep Mode	.67W, .88W with Smart Operation Panel
TEC**	MP C401: 3.776 kWh/Week, 3.810 kWh/Week with Smart Operation Panel MP C401SR: 3.819 kWh/Week, 3.853 kWh/Week with Smart Operation Panel

*Bypass Tray only.

**Typical electricity consumption by ENERGY STAR program.

Copier Features

Auto Color Selection (ACS), Auto/Manual Density Control, Auto Start, Batch Mode & SADF Mode, Color Adjustment, Color Creation Modes, Combine Mode, Copy Mode – Photo Type Selection (Printed, Glossy & Copied Photo), Cover/Slip/Chapter Sheets, Image Adjustment, Image Rotation, Job Preset (8), Job Program (25), Sample Copy, Shift/Erase Margin, Stamps/Numbering, User Codes (1,000)

Printer Controller Specifications (Standard)

CPU	Intel Celeron U3405 (1GHz)
Memory	2 GB RAM + 320 GB Hard Disk Drive
Max. Print Speed	42 ppm
Print Drivers	Standard PCL5c, PCL6, PS3, XPS and Universal Driver (via download) 600 x 600 dpi (PCL5c, XPS); 1200 x 1200 dpi (PCL6, PS3)
Max. Print Resolution	1000Base-T/100Base-TX/10Base-T Ethernet, USB2.0 Type A (2 Ports), USB2.0 Type B & SD Slot on Operation Panel
Standard Interfaces	IEEE 802.11a/g/n Wireless
Optional Interfaces	TCP/IP (IPv4, IPv6), Bonjour
Network Protocols	45 Intellifonts, 13 International Fonts
Fonts for PCL	136 Roman
Fonts for PostScript3	Windows XP/Vista/7/8/Server 2003/R2/ Server 2008/R2/Server 2012/R2, Mac OS X 10.6 or later, Citrix MetaFrame/ Presentation Server/XenApp 5.0, 6.0, 6.5, UNIX Filter for Sun Solaris, HP-UX, SCO OpenServer, RedHat Linux, IBM AIX, SAP R/3
Network Operating Systems	Device Manager NX Lite and Accounting, Device Manager NX Pro and Enterprise, Web SmartDeviceMonitor, Web Image Monitor, @Remote Enterprise Pro
Utilities	

Other Printer Features

Black Over Print, Classification Code, CLP Simulation, PDF Direct Print, Sample/Hold/Stored and Locked Print, WSD Printer

Scanner Specifications (Standard)

Scanner Resolution	100/200/300/400/600 dpi (200 dpi default)
Scanning Speed (Letter/A4)	35 ipm (B&W and F/C @ 200/300 dpi via ARDF)
Scan Area from Platen	
Main Scan	8.5" (216 mm)
Sub Scan	11.7" (297 mm)
File Formats	Single/Multi Page TIFF, PDF and PDF/A, High Compression PDF, Single Page JPEG BW Text/Line Art, Text, Text/Photo, Photo, Grayscale; Color Text/Photo, Gloss Photo Scan-to-Email (with LDAP support); Scan-to-Folder (SMB/FTP); Scan-to-URL; Network TWAIN Scanning; Scan-to-Media (USB/SD); WSD Scanner
Scan Mode	
Scan-to Modes Supported	

Document Server Specifications (Standard)

Capacity	76 GB (shared with other functions)
Max. Stored Documents	3,000 documents
Max. Pages	2,000 pages (per document) 9,000 pages (all stored documents)

Facsimile Specifications (Optional)

Type	ITU-T (CCIT) G3
Circuit	PSTN
Resolution	200 x 100 dpi, 200 x 200 dpi, 400 x 400 dpi (with optional SAF memory)
Modem Speed	33.6K – 2,400 bps with Auto fallback
Compression Method	MH, MR, MMR, JBIG
Transmission Speed	G3: Approx. 2 seconds/page (w/JBIG compression) G3: Approx. 3 seconds/page (w/MMR compression)
Scan Speed	Up to 33 spm (Letter/A4)
Auto Dialing	2,000 Quick Dials, 100 Group Dials (500 locations each)
SAF Memory Capacity	4 MB (approx. 320 pages); Maximum 28 MB (approx. 2,240 pages)
Additional Modes	Internet Fax (T.37), IP Fax (T.38), LAN Fax, Fax Forward to E-mail/Folder, LDAP Support

Other Facsimile Features

Detection of Misplaced Documents, Double Check Destination, Fax Output Timer

Security Features

Classification Codes, 802.1x Wired Authentication, DataOverwriteSecurity Unit (DOSS), Encryption (Address Book, Authentication Password, HDD, PDF, SSH, SSL Communication, S/MIME, IPsec Communication), IP Filtering, Locked Print, Network Protocol On/Off, Quota Setting/Account Limits, SNMP v3 Support, User Authentication (Windows/LDAP with Kerberos, Basic and User Codes), Wireless Protected Setup

Finishing

Internal 250-Sheet Finisher Type C400	
Paper Sizes	5.5" x 8.5" to 8.5" x 14" (A6 – A4)
Paper Weights	13 – 68 lb. Bond/140 lb. Index (52 – 256 g/m ²)
Stack Capacity	250 sheets
Staple Capacity	50 sheets/set (Letter); 30 sheets/set (Legal)
Staple Positions	1 Position; Side Parallel

Optional Hardware Accessories

One Tray Paper Feed Unit (PB1000)	
Paper Capacity	550 sheets x 1 tray
Paper Sizes	5.5" x 8.5" to 8.5" x 14" (A6 – A4)
Paper Weights	14 – 58 lb. Bond/120 lb. Index (52 – 220 g/m ²)
Dimensions (WxDxH)	20.4" x 22.1" x 4.7" (520 x 563 x 121 mm)
Two Tray Paper Feed Unit (PB1010)	
Paper Capacity	1,100 sheets (550 sheets x 2 trays)
Paper Sizes	5.5" x 8.5" to 8.5" x 14" (A6 – A4)
Paper Weights	14 – 58 lb. Bond/120 lb. Index (52 – 220 g/m ²)
Dimensions (WxDxH)	20.4" x 22.1" x 10.6" (520 x 563 x 271 mm)
One-Bin Tray Type BN1000	(Available with MP C401 only)
Paper Sizes	5.5" x 8.5" to 8.5" x 14" (A6 – A4)
Paper Capacity	100 sheets
Paper Weights	14 – 58 lb. Bond/120 lb. Index (52 – 220 g/m ²)
Side Tray Type C400	
Paper Sizes	5.5" x 8.5" to 8.5" x 14" (A6 – A4)
Paper Capacity	50 sheets
Paper Weights	16 – 43 lb. Bond/90 lb. Index (60 – 163 g/m ²)
Dimensions When Open (WxDxH)	3.3" x 16.4" x 11.6" (85 x 417 x 295 mm)

Fac49 Cabinet

(Recommended for installation with base model to bring the device up to the optimal height)

Dimensions (WxDxH)	21.7" x 21.6" x 15.0" (550 x 549 x 381 mm)
Weight	24.9 lbs. (11.3 kg)

Fac50 Cabinet

(Recommended for installation with Paper Feed Unit PB1000 to bring the device up to the optimal height)

Dimensions (WxDxH)	21.7" x 21.6" x 10.3" (550 x 549 x 262 mm)
Weight	20.0 lbs. (9.1 kg)

Fac51 Cabinet

(Recommended for installation with Paper Feed Unit PB1010 to bring the device up to the optimal height)

Dimensions (WxDxH)	21.7" x 21.6" x 7.0" (550 x 549 x 178 mm)
Weight	16.9 lbs. (7.7 kg)

Additional Accessories

Browser Unit Type M10, Copy Data Security Unit Type G, ESP XG-PCS-15D, Data OverwriteSecurity Option Type H, Fax Connection Unit Type M10, Fax Option Type M10, File Format Converter Type E, HotSpot MFP Option Type S, IEEE 802.11 Interface Unit Type O, Memory Unit Type B 32MB, OCR Unit Type M2, Optional Counter Interface Unit Type A, Smart Operation Panel Type M10, XPS Direct Print Option Type M10

Consumables

Black Toner Cartridge*	8,300 Pages
Cyan, Magenta & Yellow**	10,000 Pages

*Toner yield based on 6% coverage.
**Toner yields based on 5% coverage.

For maximum performance and yield, we recommend using genuine Ricoh parts and supplies.

RICOH
imagine. change.

www.ricoh-usa.com

Ricoh Americas Corporation, 70 Valley Stream Parkway, Malvern, PA 19355, 1-800-63-RICOH
Rico® and the Ricoh Logo are registered trademarks of Ricoh Company, Ltd. All other trademarks are the property of their respective owners. ©2014 Ricoh Americas Corporation. All rights reserved. The content of this document, and the appearance, features and specifications of Ricoh products and services are subject to change from time to time without notice. Products are shown with optional features. While care has been taken to ensure the accuracy of this information, Ricoh makes no representation or warranties about the accuracy, completeness or adequacy of the information contained herein, and shall not be liable for any errors or omissions in these materials. Actual results will vary depending upon use of the products and services, and the conditions and factors affecting performance. The only warranties for Ricoh products and services are as set forth in the express warranty statements accompanying them.

R3487

