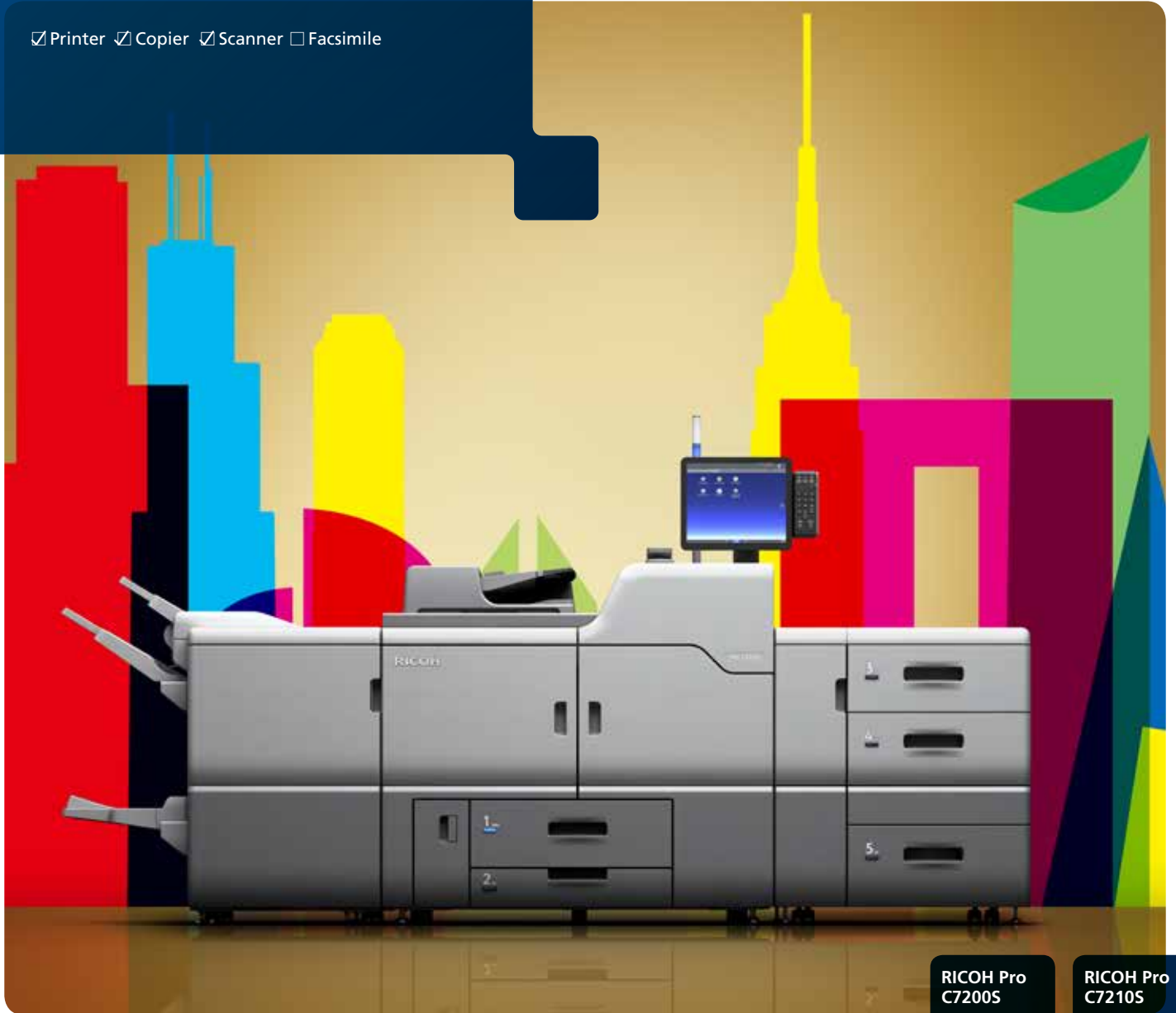


Color Sheet-Fed Printer

RICOH Pro C7200 SERIES

Printer Copier Scanner Facsimile

RICOH
imagine. change.



**RICOH Pro
C7200S**

85 ppm
4 Station
MFP Model

**RICOH Pro
C7210S**

95 ppm
4 Station
MFP Model

RICOH Pro C7200S/Pro C7210S

SYSTEM SPECIFICATIONS

Hardware Specification

Process	4-drum dry electrostatic transfer system with internal transfer belt
Fusing	Oil-less belt-fusing method
Engine Speed	Pro C7200S - 85 ppm (8.5" x 11") Pro C7210S - 95 ppm (8.5" x 11")
Max Monthly Volume	240K
Duty Cycle	Pro C7200S - 650K Pro C7210S - 800K
Laser Resolution	2400 x 4800 dpi VCSEL
Warm-Up Time	Less than 300 sec.
Limitless Paper Supply	Supported
Paper Size	13" x 19.2"/13" x 49.6" (when using Oversize Tray Option)
Maximum Printable Area	12.7"x18.9"/12.7" x 49.4" (when using Oversize Tray Option)
Paper Weight	Tray 1: 52-300g/m ² Tray 2: 52-256g/m ² Optional LCIT RT5110 Trays 3 and 5: 52-256g/m ² Tray 4: 52-300g/m ² Optional Vacuum Feed LCIT RT5120 Trays 3-8: 52 - 360g/m ² Bypass Tray: 52-216g/m ²
Paper Type	Uncoated Paper, Coated Paper (gloss and matte), Recycled Paper, Preprinted, Letterhead, Pre-punched, Tab Stock, Textured Paper, Label Paper, Carbonless Paper
Paper Capacity	Tray 1: 1,000 sheets x 2 (Tandem) Tray 2: 500 sheets Optional LCIT RT5110 Trays 3 and 5: 1,000 sheets each Tray 4: 2,000 sheets Optional Vacuum Feed LCIT RT5120 Trays 3-8: 2,200 sheets each Bypass Tray: 500 sheets
Power Source	208-240V, 16A, 50/60Hz (2 Dedicated Power Cords)
Max. Power Consumption	Less than 5,000W
Typical Electricity Consumption (TEC)*	Pro C7200S: 11.5 kWh/week Pro C7210S: 12.5Wh/week
*Typical Electricity Consumption by ENERGY STAR® program	
ENERGY STAR EPEAT*	Certified Gold (TotalFlow Server R-62A) Silver (E-85A and E-45A Controller)
*EPEAT only available in the US	
Dimensions (W x D x H)	Pro C7200S and Pro C7210S 52" x 35.8" x 48.4"
Weight	Pro C7200S and Pro C7210S 1,279 lbs.

Printer Controllers

EFI Color Controller E-85A	Fiery FS300 Pro
Fiery System Version	External
Configuration	16GB (4GB x 4)
Memory	Intel Xeon E5-2637 (3.5 GHz up to 3.7 GHz with Turbo)
CPU	500 GB + 2 x 2 TB SATA
HDD	Windows 10 IoT Enterprise 2016 LTSB
Operating System	
EFI Color Controller E-45A	Fiery FS300 Pro
Fiery System Version	External
Configuration	8GB (4GB x 2)
Memory	Intel i5-6500 (3.2GHz up to 3.6GHz with Turbo)
CPU	3TB (1TB SATA x 3)
HDD	Linux
Operating System	Windows 10 IoT Enterprise 2016 LTSB
IPDS	Optional
RICOH TotalFlow Server R-62A	External
Configuration	Standard 32GB (4GB x 8)
Memory	Additional 32GB (16GB x 2 (Optional))
CPU	Intel Processor 6th Gen Core i7
HDD	6700 3.4GHz
Operating System	3TB (1TB SATA x 3)
IPDS	Linux Optional

Hardware Accessories

Plockmatic HCI3500 High Capacity Interposer	
Dimensions (W x D x H)	47.2" x 28.7" x 43"
Weight	551 lb.
Paper Size	Maximum up to 13" x 26"
Paper Weight	65-350gsm
Paper Capacity	3,500 sheets (1,750 sheets per tray)
Plockmatic MPS - Oversize Sheet Stacker	
Dimensions (W x D x H)	35.4" x 26.8" x 41.8" (width extends to max 55")
Weight	172 lb
Power Supply	100-240 V, 50-60 Hz
Paper Size	8.5"x11" (LEF) - 13" x 49.6"
Paper Weight	150-360g/m ²
Paper Capacity	2,000 sheets

Vacuum Feed Large Capacity Tray (LCIT RT5120)	
Dimensions (W x D x H)	41.5" x 28.7" x 39.4"
Weight	Less than 508 lb.
Power Consumption	Less than 1,000 W
Power Supply	100-120 V
Paper Size	5.5" x 8.5" - 13" x 19.2"
Paper Capacity	4,400 sheets (2,200 sheets per tray)
Paper Weight	Trays 3-8:52-360g/m ²

Vacuum Feed Oversize Tray Type S9	
Dimensions (W x D x H)	When attached to the LCIT RT5120 the dimensions become 50.8" x 28.7" x 39.4"
Weight	Maximum up to 13" x 27.5"
Paper Size	Shift Tray: 52-300g/m ²
Paper Capacity	730 sheets

LCIT RT5110	
Dimensions (W x D x H)	34.1" x 28.7" x 39.4"
Weight	Less than 408 lbs.
Paper Size	5.5" x 8.5" - 13" x 19.2"
Paper Weight	Trays 3 and 5: 52-256g/m ² Tray 4: 52-300g/m ²
Paper Capacity	Trays 3 and 5: 1,000 sheets each Tray 4: 2,000 sheets

Multi Bypass Tray Unit (BY5020)	
Power Source	From LCIT RT5120
Paper Capacity	500 sheets
Paper Size	5.5" x 8.5" - 13" x 19.2"
	Maximum Paper size extend up to 13" x 49.6" with Multi Bypass Oversize Tray Option
Paper Weight	52-216g/m ²

3,000 Sheets Finisher with 100 Sheets Stapler (SR5050)	
Capacity (Proof Tray)	250 sheets (8.5" x 11" or smaller) 50 sheets (8.5" x 14" or larger)

Capacity (Shift Tray)	8.5" x 11" - 3,000 sheets 8.5" x 14" - 11" x 17" - 1,500 sheets 12" x 18" - 13" x 19.2" - 1,000 sheets
Paper Weight	Proof Tray: 52-216g/m ² Shift Tray: 52-360g/m ²

Output Jogger Staple	Standard 8.5" x 11" - 2 to 100 sheets 8.5" x 14" - 11" x 17" - 2 to 50 sheets
Staple Position	Top, Bottom, 2 Staples, Top Slant
Dimensions (WxDxH)	39.2" x 28.7" x 44.3" (996 x 730 x 1,126 mm)
Weight	246 lbs. (112 kg)

Booklet Finisher (SR5060)	
Capacity (Proof Tray)	250 sheets (8.5" x 11" or smaller) 50 sheets (8.5" x 14" or larger)
Capacity (Shift Tray)	8.5" x 11" - 2,500 sheets 8.5" x 14" - 11" x 17" - 1,500 sheets 12" x 18" - 13" x 19.2" - 1,000 sheets

Output Jogger Paper Weight	Standard Proof Tray: 52-216g/m ² Shift Tray: 52-360g/m ²
Staple	8.5" x 11" - 2 to 100 sheets 8.5" x 14" - 11" x 17" - 2 to 50 sheets

Staple Position	Top, Bottom, 2 Staples, Top Slant
Saddle Stitch Staple	8.5" x 11" - 13" x 19.2" - 20 sheets; Center 2 Position
Dimensions (WxDxH)	39.2" x 28.7" x 44.3" (996 x 730 x 1,126 mm)
Weight	246 lbs. (112 kg)

Booklet Trimmer (TR5040)	
Trimming Type	One Side Edge
Trimming Capacity	1 to 20 sheets (2 to 40 pages after folding)
Paper Size	Up to 13" x 19.2"
Stack Capacity	Up to 60 sets
Limitless Stack	Yes
Dimensions (WxDxH)	43.9" x 23.3" x 21.8" (1,115 x 591 x 555 mm)
Weight	165 lbs. (75 kg)

Cover Interposer Tray (CI5030)	
Paper Size	5.5" x 8.5" - 13" x 19.2"
Paper Weight	64-216g/m ²
Stack Capacity	200 sheets x 2 trays
Dimensions (WxDxH)	21.2" x 28.7" x 50.8" (540 x 730 x 1,290 mm)
Weight	99 lbs. (45 kg)

Ring Binder (RB5020)	
Paper Size	8.5" x 11"/A4
Paper Weight	64-216g/m ²
Stack Capacity	Binding Mode: 11 sets; Punching Mode: 100 sheets
Ring Bind Capacity	2 to 100 sheets
Number of Holes	LTR - 21, A4 - 23
Ring Supply	Black or White, Up to 50 or 100 sheets
Tab Stock	Supported
Dimensions (WxDxH)	34.2" x 28.7" x 39.8" (870 x 730 x 1,010 mm)
Weight	308 lbs. (140 kg)

Perfect Binder (GB5010)	
Booklet Size	Width: 7.9" x 11.7" (201-297 mm); Length: 5.5" x 8.5" (140-216 mm)
Booklet Thickness	Less than 1" (23 mm)
Body Page Capacity	200 sheets
Cutting Directions	3 Edges, 1 Edge, None
Paper Weight	Body Pages: 64-163g/m ² Cover Pages: 90-300g/m ²
Stack Capacity/Booklet	50 sheets: 13; 100 sheets: 7; 200 sheets: 4
Dimensions (WxDxH)	42.9" x 31.1" x 54.6" (1,090 x 791 x 1,387 mm)
Weight	770 lbs. (350 kg)

6-Position Multi-Folding Unit (FD5020)	
Folding Type	Single Sheet Mode: Z-Fold, Half-Fold/Print inside, Half-Fold/Print outside, Letter Fold-in/Print inside, Letter Fold-in/Print outside, Letter Fold-out, Double Parallel/Print inside, Double Parallel/Print outside, Gate-Fold/Print inside, Gate-Fold/Print outside
Paper Size	Multiple Sheets Mode: Half-Fold/Print inside, Half-Fold/Print outside, Letter Fold-in/Print inside, Letter Fold-in/Print outside, Letter Fold-out
Single Sheet Mode: Z folding:	8.5" x 11" - 12" x 18"; Half folding: 8.5" x 11" - 13" x 19.2"; Letter folding: 8.5" x 11" Multiple Sheets Mode: Double Parallel folding: 8.5" x 11" - 12" x 18"; Gate folding: 8.5" x 11" to 12" x 18"; Half folding: 8.5" x 11" - 13" x 19.2"; Letter Fold-out: 8.5" x 11"; Letter Fold-in: 8.5" x 11"
Dimensions (WxDxH)	18.5" x 28.7" x 39.4" (470 x 730 x 1,000 mm)
Weight	203 lbs. (92 kg)

Plockmatic Booklet Maker (PBM350/PBM500)	
Paper Size	8.5" x 11" - 12" x 18"
Paper Weight	64-300g/m ²
Set Size	PBM350 - 2-35 sheets (80g/m ²) PBM500 - 2-50 sheets (80g/m ²)
Power Supply	115 V, 60 Hz
Dimensions (WxDxH)	55.9" x 35.4" x 27.6" (1,420 x 970 x 700 mm)
Weight	297 lbs. (135 kg)

GBC StreamPunch Ultra Punched Paper Sizes	5.5" x 8.5" , 8.5"x11", 8.5"x14", 11"x17" , 12"x18"
Punched Media Weight Range	75-300g/m ²
Tab Punching	Yes
Two-Up Punching	Yes
Power Supply	115 V, 60 Hz
Dimensions (WxDxH)	17.5" x 28.7" x 39.4" (445 x 730 x 1,000 mm)
Weight	220 lbs. (100 kg)

High Capacity Stacker (SK5040)	
Dimensions (W x D x H)	35.4" x 28.7" x 39.8"
Weight	Stacker: 264 lb., Rollaway cart: 33 lb.
Power Consumption	Less than 132 W
Power Supply	120 V, 50/60 Hz
Paper Capacity	1200 sheets; Proof tray: 250 sheets
Paper Weight	5,000 sheets; Proof tray: 250 sheets
Output Jogger	52-360g/m ²
Rollaway Cart	Standard, optional additional carts available

Other Options	
Decuri Unit DU5060, Buffer Pass Unit Type S9, Bridge Unit BU5010	

Consumables	
CMYK Toner	45K prints/bottle*
Waste Toner Bottle Yield:	220K prints/bottle*

* Based on 8.75% coverage (LT)	
TCRU Program	Supported

Workflow Solutions Supported	
-------------------------------------	--

RICOH ProcessDirector®, RICOH TotalFlow Prep, RICOH TotalFlow Production Manager, RICOH TotalFlow BatchBuilder, RICOH @Remote, EFI®DigitalStoreFront®, CGS/ ORIS Lynx & Evaluate, EFI Color Profiler Suite, EFI Fiery®Graphic Arts Package Premium Edition, EFI Impose, EFI Compose, DirectSmile®, EFI Fiery Central, Objectif Lune	Specifications subject to change without notice. Contact Ricoh for a list of certified media.
--	---



www.ricoh-usa.com

Ricoh USA, Inc., 70 Valley Stream Parkway, Malvern, PA 19355, 1-800-63-RICOH ©2018. Ricoh USA, Inc. All rights reserved. Ricoh® and the Ricoh logo are registered trademarks of Ricoh Company, Ltd. All other trademarks are the property of their respective owners. The content of this document, and the appearance, features and specifications of Ricoh products and services are subject to change from time to time without notice. Products are shown with optional features. While care has been taken to ensure the accuracy of this information, Ricoh makes no representation or warranties about the accuracy, completeness or adequacy of the information contained herein, and shall not be liable for any errors or omissions in these materials. Actual results will vary depending upon use of the products and services, and the conditions and factors affecting performance. The only warranties for Ricoh products and services are as set forth in the express warranty statements accompanying them.

