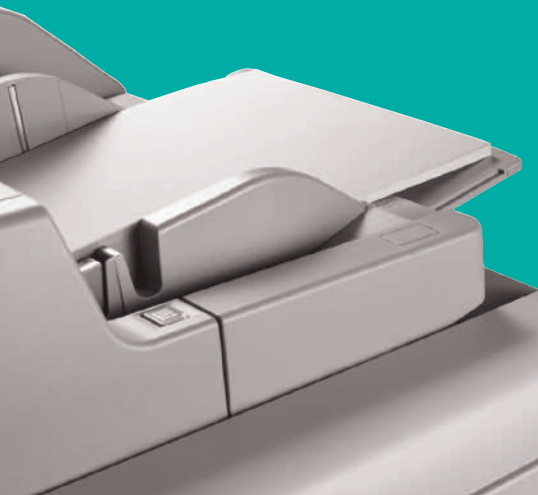


RICOH Pro C651EX/C751EX/C751
Color Production System
Exceptional speed, quality and value
for high-volume workflow

RICOH

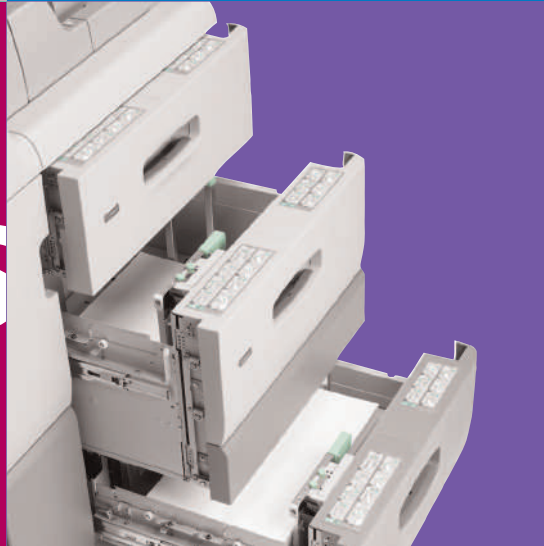
reliable



productive



results



RICOH Pro C651EX/C751EX/C751

Convenience and consistency for professional results.

Finally, a color production-class system that lets you do more—for less. Introducing the RICOH® Pro C651EX/C751EX/C751, the revolutionary color production system that delivers superior 4800 dpi image quality, enhanced media handling, and incredible value for the most challenging and unique print jobs. This powerful and versatile production printer is ideal for commercial and in-house print centers that need one system to do it all. It delivers outstanding quality color output, incredible throughput, high uptime and convenient inline finishing options to help you improve document workflow and grow your business.

The affordable Ricoh Pro C751 printer offers high-volume output up to 75 pages per minute. The Pro C651EX and C751EX MFP models add advanced copying, scanning and a wide range of distribution options to meet every customer requirement with unprecedented efficiency.



Power Convenience Uptime Efficiency

Discover Profitable Productivity

Combining power, flexibility and reliability, the RICOH Pro C651EX/C751EX/C751 produces a vast array of color output with extended duty cycles to drive more in-house revenue opportunities.

- Add value to your production runs with incredible resolution at fast speeds for the best mix of quality and productivity on the market. The system delivers optimal output quality with unrivaled 1200 x 4800 dpi resolution.
- Choose from three heavy-duty systems for fast, high-volume color output. The Pro C651EX MFP features a 65 pages-per-minute print engine, and the Pro C751EX MFP and Pro C751 Printer deliver 75 pages per minute.
- Quickly identify the active paper tray and minimize misfeeds with the tray indicator light. All paper trays feature an LED lamp, so operators can efficiently refill paper in idle trays during print runs to prepare for the next job.
- Speed processing of large jobs and ensure maximum throughput. With dual-processor architecture and robust horsepower, operators can simultaneously RIP one file while processing another to enhance productivity.
- Maximize uptime without compromising quality with an innovative liquid-cooled developer system that maintains operating temperature on even the longest print runs.

Superior Image Quality

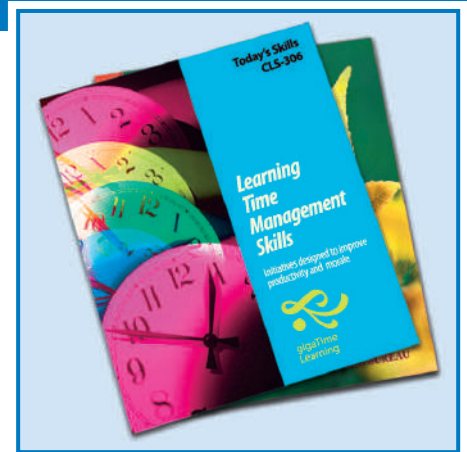
Designed to deliver unprecedented image clarity and definition, the RICOH Pro C651EX/C751EX/C751 ensures exceptionally accurate color output without compromising productivity or your budget.

- Achieve the highest resolution available—1200 x 4800 dpi—with revolutionary Vertical Cavity Surface Emitting Laser (VCSEL) technology. The 40-beam VCSEL laser delivers tighter registration and more accurate fill for sharper text and smoother graphics, job after job.
- Deliver consistent, reliable image quality from the first print to the last with continuous parallel calibration. Sensors on the transfer belt monitor CMYK values and recalibrate color density on the fly for more accurate, dependable color output.
- Employ precision front-to-back registration control to maintain accuracy on double-sided documents. VCSEL technology identifies paper expansion and contraction and aligns the image automatically for finite adjustments.
- Enhance brilliant images on a wide variety of substrates with PxB toners and oil-less fusing technologies. Smaller, uniform toner particles with a low melting point improve adhesion on thick, textured and coated stocks for limitless possibilities.

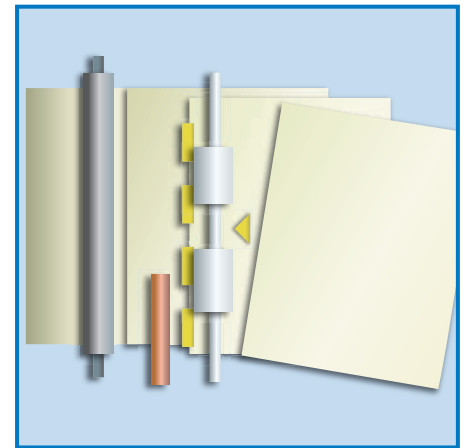
Advanced Media Capabilities

Produce a wider range of jobs—including direct mail, cards, menus, booklets and manuals—with an extensive collection of media handling options.

- Experience virtually endless productivity with 7,000-sheet paper capacity—replaceable on the fly from six media pick points.
- Accommodate large-size, thick stock up to 300 gsm, making the system ideal for direct mailers, transpromotional and variable data printing.
- Improve productivity with the innovative Paper Library feature. Select up to 1,000 preset or custom paper profiles and choose from up to 50 system settings for quick, automated adjustments to a variety of paper types. Link to Fiery Paper Catalog to ensure real-time synchronization.
- Prevent paper warping and curling and ensure precise paper feeding with Air-Assist feeding technology, a counter steering roller and optional paper decurler unit.



High-resolution imaging with state-of-the-art VCSEL technology provides outstanding 1200 x 4800 dpi resolution and digital halftone screens.



Mechanical paper registration automatically adjusts paper to ensure precise registration accuracy on the front and back of every sheet.



Easily visible active tray LED indicators allow users to quickly identify and refill idle paper trays while a print job is in progress.

Versatile Design, Cost-Effective Production

An all-in-one system to give you everything, every time.

Professional In-line Finishing Capabilities

Choose from a variety of finishing options to design a complete end-to-end document production solution that matches your applications. In-line finishing reduces labor costs, allowing your staff to be more productive and your business more profitable. RICOH Pro C651EX, C751EX and Pro C751 professional finishing options include:

- **Booklet Finisher SR5040 and Staple Finisher SR5030:** Offers multi-position stapling of up to 100 sheets, stacking of up to 2,500 sheets, 20-sheet saddle-stitch finishing and folding —plus an optional Trimmer Unit for a flush finished booklet edge and an optional Punch Unit for 2- or 3-hole punching.
- **Fully Automatic In-line Booklet Maker:** Ricoh's partnership with Plockmatic International provides in-line finishing, square folding and trimming of booklets up to 30 sheets.

Workflow

The Fiery E-41A Print Controller provides full control to streamline workflow, enhance color performance and improve productivity.

Trained Customer Replaceable Units

Trained Customer Replaceable Units (TCRUs) enable trained operators to replace key hardware components quickly without waiting for a service technician. The end result is greater uptime, which enables you to generate more revenue.

High-Resolution Color Scanner with Automatic Reversing Document Feeder (ARDF)

Quickly capture hardcopy originals for copying, editing, storage or electronic document distribution. The ARDF scans stacks of originals as fast as 65 or 75 originals-per-minute in full-color, grayscale, or black & white to put users in total control of file size and image quality for every application. (Available on the Pro C651EX and Pro C751EX only).



6-Pattern Multi-Folding Unit FD5010

Execute several different paper folds to create a variety of finished documents for direct mail and other applications.

DLT Tray Kit

Expand capacity of oversize sheets (up to 12" x 18") with the 1,000-sheet DLT Tray Kit option.

RICOH Pro C651EX/C751EX/C751

User-Friendly Job Programming

The intuitive control panel features a full-color 10.4" touch-screen LCD and clearly organized keys for simplified operation. Easily manage system functions and job queues, access the Paper Library, control copy/scan settings and preview document storage/print-on-demand tasks right at the device. (Available on the Pro C651EX and Pro C751EX only).

Elevated Operator Call Light

Easily check system status at-a-glance with helpful operator call light.

Simplified Toner Replenishment

Easily replace high-yield toner bottles in one step. Featuring a sub-hopper design, operators can replace supplies while the system is running for non-stop productivity.

500-Sheet Multi-Bypass Tray

Conveniently feed stocks for inserts, colored pages, special media, or short-run jobs without changing an in-line paper source. The optional Multi-Bypass Tray rests on the Large Capacity Tray.



RICOH Pro C651EX/C751EX Main Unit

Maximize productivity with 65/75-ppm/cpm output speeds. Solidly built for lasting value, this production-duty engine with VCSEL technology provides 1200 x 4800 dpi image quality and supports media up to 300 gsm. Standard paper sources include a tandem 2 x 1,000-sheet paper tray and a 500-sheet second tray to accommodate sizes up to 12" x 18". Optional paper sources bring total paper capacity to 7,000 sheets.

Active Tray Indicator Light

Avoid misfeeds by quickly identifying which tray is actively feeding paper—and load idle trays in preparation for the next job.

Large Capacity Tray (LCT) with Air-Assist Paper Feed

Dual 1000-sheet drawers and one 2,000-sheet drawer accept media up to 13" x 19.2" for the production of full-bleed pages with space for crop marks and color registration bars. Built-in Air-Assist technology provides reliable feeding of very thin as well as coated stocks up to 300 gsm in weight.

RICOH Pro C651EX/C751EX/C751

Production-Class Performance

Experience maximum uptime with a robust system designed to handle the rigors of high-volume production.

- Minimize maintenance wait times with Trained Customer Replaceable Units (TCRUs). Operators can quickly replace eight key imaging components, including the fusing unit, charger roller and paper feed rollers.
- Replace toner, waste bottle and paper supplies without interrupting print jobs for greater productivity. A unique sub-hopper unit stores additional toner for up to 1,000 sheets to ensure continuous runs during routine maintenance tasks.
- Run up to 180,000 pages per month with optimal efficiency. The heavy-duty, steel-welded design minimizes vibrations to withstand heavy use and continuous operation.
- Identify system alerts quickly from greater distances with a pole-mounted, highly-visible operator call light that extends well above the system.

Optimal Print Performance

Streamline your workflow with the powerful Fiery E-41A Print Controller and improve the quality and speed of every print job.

- Provide accurate color across platforms, applications and media with precise color management that delivers professional-grade calibration, matching and proofing.
- Select up to 250 Spot Colors, identify embedded ICC profiles, and choose from a wide range of color simulation capabilities for accurate color reproduction.
- Extend VDP capabilities with EFI Fiery FreeForm and PPML support and create targeted, personalized marketing collateral cost-effectively in-house.
- Leverage several job management tools—including EFI Command Workstation, HotFolders, Rush Printing, Virtual Printers and JDF for job ticket support—to simplify workflow, expedite jobs and improve consistency.
- Manage complex documents and assembly jobs with Fiery utilities such as SeeSequence Impose and Compose to produce high-quality collateral from a single, integrated, easy-to-use platform.

Professional, Inline Finishing

Take advantage of several advanced finishing options for a complete end-to-end document production system that minimizes labor expenses and enables you to meet exacting job requirements more efficiently.

- Choose from six different patterns of paper folding with the new and improved multi-folding unit. Users can make precise adjustments at the operation panel to simplify folding for even the most complex direct mail jobs.
- Produce finished, professional-quality booklets with up to 100 stapled pages or up to 20 folded, saddle-stitched sheets. An optional face trimmer and punch unit enhance output capabilities.
- Achieve fully automatic, in-line finishing, folding and trimming of booklets up to 30 sheets through Ricoh's partnership with Plockmatic International.
- Expand finishing options with GBC StreamPunch Pro EX – a device with interchangeable die sets to individually punch pages, then bind the pages off-line.
- Enjoy fully automated ring-binding for faster, more cost-effective booklet creation. Operators can choose from two ring sizes for booklets up to 50 or 100 sheets.
- Run unattended, extended print runs with the high-capacity stacker. The stacker can store 5,000 sheets and features a roll-away cart for convenient off-line finishing, packing and distribution.



The Trained Customer Replaceable Unit (TCRU) kit includes a wide range of user-replaceable parts for convenient in-house maintenance that reduces expenses and maximizes system uptime.



New multi-folding capability offers six patterns and precise adjustments for up to three pages of paper, making it ideal for any direct mail project.



Intelligent Color Management provides accurate color across platforms, applications and media. It allows users to customize color output for maximum quality and consistency to suit specific jobs.

Control Modular Intuitive Performance

Fast, Efficient, Integrated Workflow

Manage all of your production needs from a single, versatile MFP. The Pro C651EX and C751EX combine high-speed color printing with convenient scanning, copying and document storage and distribution.

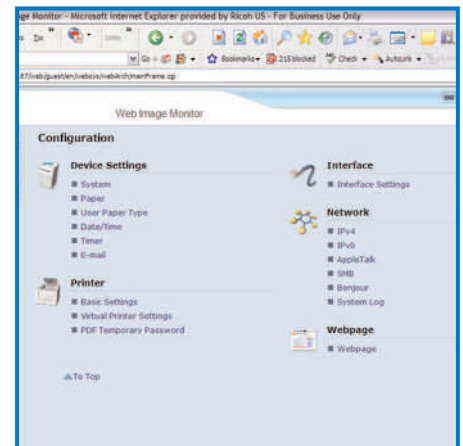
- Distribute documents quickly and efficiently throughout the enterprise with a wide range of scan-to destinations, including e-mail, URL, FTP and more.
- Store frequently used files on a Document Server for previews, modifications and reprints without re-ripping.
- Program virtually any job easily from the intuitive touch-screen control panel and monitor its progress in production.



Powerful, Intuitive Management

A wide range of smart utilities offers cost-saving opportunities to streamline workflow and improve operations.

- Use Web Image Monitor to program and administer key system functions via a standard Web browser. Remote access to system details, supply status and settings enable users to manage the system anytime, anywhere.
- Monitor system status remotely in real time with @Remote™. This diagnostic solution collects device service and error log data remotely and reports media, toner and service alerts.

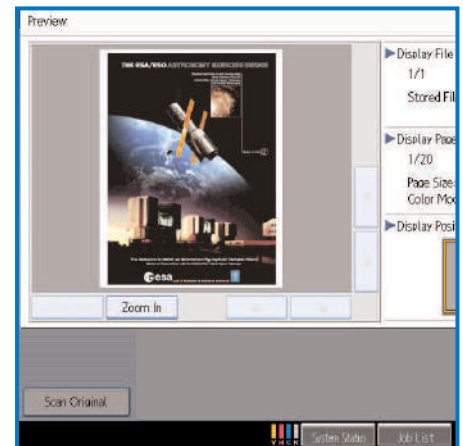


Manage the Pro C651EX/C751EX/C751 from any workstation via a standard Web browser and check or program key system functions remotely for fast, convenient administration.

Safe, Secure Administration

Advanced security features ensure system integrity and protect sensitive documents from multiple threats.

- Maintain high security throughout every task. The Pro C651EX/C751EX/C751 achieved sophisticated Common Criteria (ISO/IEC 15408) certification and adheres to strict, industry-specific security requirements.
- Erase confidential data automatically and permanently from the system hard drive with DataOverwriteSecurity System (DOSS).
- Restrict access to authorized users. The system supports external (Windows, LDAP) and internal (basic and user code) authentication to maximize efficiency and accountability.
- Safeguard documents, address book data and remote management access. The system supports IP security protocols to encrypt every IP packet in the data stream for high-security applications.



Access, preview and modify frequently-used scan and print jobs stored on the Document Server prior to printing to save time and minimize errors.

The Total Green Office Solution



Ricoh continues its long-standing commitment to developing office solutions with environmentally friendly and superior energy- and supply-saving features, without compromising productivity.

RICOH Pro C651EX/C751EX/C751

Specifications

Hardware Specifications

Copy Process	4-drum dry electrostatic transfer system with internal transfer belt
Fusing	Oil-less Belt-fusing Method
Engine Speed	C651EX: FC/BK 65 ppm C751EX/C751: FC/BK 75 ppm
Warm-up Time	Less than 300 sec.
Limitless Paper Supply	Supported
Max. Print Area	12.7" x 18.9" (323 mm x 480 mm)
Paper Weight	
Trays 1 & 4	14 lb. Bond – 110 lb. Cover (52.3 – 300 g/m ²)
Trays 2, 3 & 5	14 lb. Bond – 140 lb. Index (52.3 – 256.0 g/m ²)
Bypass Tray Unit	14 lb. Bond – 80 lb. Cover (52.3 – 220.0 g/m ²)
Duplex	16 lb. Bond – 95 lb. Cover (60 – 256.0 g/m ²)
Max Monthly Volume	180K
Duty Cycle	350K
Power Specification	208 – 240V, 16A, 50/60Hz
Max. Power Consumption	4000W
Dimension (WxDxH)	Printer version: 52" x 35.8" x 47.9" (1,320 mm x 910 mm x 1,218 mm) Copier version: 52" x 35.8" x 48.4" (1,320 mm x 910 mm x 1,230 mm)
Weight	Printer version: Approx. 1,212 lbs. (less than 550 kg) Copier version: Approx. 1,278 lbs. (less than 580 kg)
ARDF	Standard on EX
Paper Capacity	Standard: 1st Tray: 1,000 sheets x 2 (Tandem); 2nd Tray: 500 sheets Optional: 3rd Tray: 1,000 sheets 13" x 19.2" LCT; 4th Tray: 2,000 sheets 13" x 19.2" LCT; 5th Tray: 1,000 sheets 13" x 19.2" LCT Bypass Tray: 500 sheets

Copier Specifications (C651EX, C751EX only)

Original Type	Book/Sheet/Object
Original Size	Max: A3/11" x 17" Min: A5, 5.5" x 8.5"
Copy/Print Size	A3 – A5, Up to 330 mm x 458 mm 11" x 17" – 5.5" x 8.5", 13" x 18"
First Copy Output Time	FC/BK Less than 11 sec
Multi Copy Speed	C651EX 65 cpm C751EX 75 cpm
Multi Copy Resolution	Up to 9,999 Copy: 1200 dpi Print: 1200 dpi x 4800 dpi Scan Copy: 600 dpi Scan Send: 600 dpi
Paper Library	Yes
User Code	8 digits/500 user code

Printer Specifications

Controller	Fiery E41A
System Version	Fiery System 9 Release 2
CPU	Intel Core 2 Duo E8400 3.0 GHz
Memory	2 GB
HDD	160 GB
DVD RW Drive	Supported
Operating System	Windows XP Professional x64 Edition
Network Protocol	TCP/IP (IPv4, IPv6), Apple Talk, SMB
PDL	PostScript 3, PCL 5c, PCL 6
VDP	PPML v.2.2 Fiery Free Form v.1 and .2.1
Print Resolution	1200 dpi x 4800 dpi
Font	PS3: 136 + 2MM; PCL: 80
Fiery Menu via Operation Panel	Supported
Network Interface	Ethernet 1000/100/10Base-T x2
Note:	USB port is available for users for USB print.
Dimension (WxDxH)	8.3" x 18.9" x 19.2" (212 mm x 482 mm x 488 mm)
Weight	43.1 lbs. (19.6 kg)
Power Specification	100 – 240V, 3.0A, 50/60Hz
Max. Power Consumption	350W

Fiery Utilities (Standard)

Print Submission & Management	Efi Driver, Efi Command WorkStation, Efi Command WorkStation for Mac, Fiery WebTools, Efi HotFolder, Efi Virtual Printers
Color Management & Proofing	Efi Fiery Color Wise Pro Tools
Imposition & Document Assembly	Mixed Media, Paper Catalog, Tab Shift, Insert Tab, Booklet Maker
Variable Data Printing	Efi Fiery Free Form, Fiery VDP Resource Manager
Scanning	Fiery Scan, Fiery Remote Scan

Fiery Utilities (Optional)

Color Management & Proofing	Fiery Graphic Arts Package, Fiery Graphic Arts Package Premium Edition, Efi Color Profiler Suite
Imposition & Document Assembly	SeeSequence Impose, SeeSequence Compose

Hardware Accessories

13" x 19.2" Large Capacity Tray	
Dimensions (WxDxH)	34" x 28.7" x 47.9" (865 mm x 730 mm x 1218 mm) Less than 396 lbs. (less than 180 kg)
Weight	Less than 76dB
Noise (Power Level)	A5 (SEF)/HLT (SEF) – 13" x 19.2"
Paper Size	4th tray: 1,000 sheets 5th tray: 2,000 sheets 6th tray: 1,000 sheets
Paper Capacity	
Air Assist Paper Pickup	Yes (all tray)
Multi Bypass Tray Unit	
Paper Capacity	500 sheets (20 lb. Bond, 80 g/m ²)
Paper Size	A5 – A3 – 5.5" x 8.5" – 13" x 19.2"*1
Paper Weight	14 lb. Bond – 80 lb. Cover (52.3 – 216 g/m ²)

Finishers (SR5030/SR5040 Booklet Maker)

Dimensions (WxDxH)	39" x 28.7" x 44.5" (990 mm x 730 mm x 1130 mm)
Note:	Does not include projections
Weight	Less than 286 lbs. (less than 130 kg)
Power Source	100 – 240V
Power Consumption	Less than 250W
Output Jogger	Standard
Proof Tray	Stack capacity: 250 sheets Paper size: Max up to 13" x 19.2" Stack capacity: 2,500 sheets
Shift Tray	
Staple Specifications	
Paper Size	B5 – A3 8.5" x 11" – 11" x 17"
Paper Weight	17 – 24 lb. Bond
Staple Position	Top, Bottom, 2 Staples, Top-slant
Staples Capacity*	A4, B5, 8.5" x 11": 2 – 100 sheets A3, B4 11" – 17", 8.5" x 14": 2-50 sheets Z-folding: 10 sheets

Saddle Stitch Specifications

Paper Size	8.5" x 11" – 13" x 19.2"
Paper Weight	17 – 24 lb. Bond
Staple Position	Center 2 position
Staples Capacity*	18 – 20 lb. Bond: 20 sheets 20 – 24 lb. Bond: 15 sheets Cover Sheet: One cover sheet (up to 90 lb. Index/163 g/m ²) can be included in the above stapling capacity.

Punch Specifications (Option)

Number of Punch	2 or 3 holes
Booklet Trimmer (TR5040)	
Dimension (WxDxH)	43.9" x 23.2" x 21.8" (1,115 mm x 591 mm x 555 mm) 165 lbs. (75 kg)
Weight	11" x 17" – 5.5" x 8.5"; Max. 13" x 19.2"
Trimming	TypeOne side edge Face Trim
Trimming Capacity	1 – 20 sheets (2 – 40 pages after folding)
Cover Interposer	
Dimension (WxDxH)	21.2" x 28.7" x 50.8" (540 mm x 730 mm x 1,290 mm) Less than 99 lbs. (less than 45 kg)
Weight	11" x 17" – 5.5" x 8.5"; Max. 13" x 19.2"
Paper Size	17 lb. Bond – 80 lb. Cover
Paper Weight	17 lb. Bond – 80 lb. Cover
Cover Paper Capacity	200 sheets x 2 trays

Multi-Folding Unit (FD5010)

Folding Type	Single Sheet: Z-fold, Half fold/Print inside, Half fold/Print outside, Letter fold-in/Print inside, Letter fold-in/Print outside, Letter fold-out, Double Parallel/ Print inside, Double Parallel/Print outside, Gate Fold/Print inside, Gate Fold/Print outside
Paper Size	Multiple Sheets: Up to 3 sheets, Half fold/Print inside, Half fold/Print outside, Letter fold-in/Print inside, Letter fold-in/Print outside, Letter fold-out, Single Sheet Mode: up to 12" x 18" Half folding: up to 13" x 19.2" Letter folding in/out: 8.5" x 11" Double parallel: up to 12" x 18" Gate folding: 8.5" x 11" Multiple Sheet Mode: Half folding – up to 13" x 19.2" Letter folding in: 8.5" x 11" Letter folding out: 8.5" x 11" Single Sheet Mode: 28 lb. Bond Multiple Sheet Mode: 20 lb. Bond
Paper Weight	120V, 60Hz 18.3" x 28.7" x 39.3" (466 mm x 730 mm x 1,000 mm) 202.4 lbs. (92 kg)
Power Supply Dimension (WxDxH)	
Weight	
DLT/A3 Tray Kit Dimensions (WxDxH)	19.5" x 20.8" x 6.9" (495 mm x 530 mm x 175 mm) 22 lbs. (10 kg)
Weight	
Paper Size	Up to 11" x 17"
Paper Capacity	1,000 sheets
Ring Binder (RB5010) Dimensions (WxDxH)	34.2" x 28.7" x 39.7" (870 mm x 730 mm x 1,010 mm) Less than 308 lbs. (less than 140 kg)
Weight	
Power Supply	100 – 240V, 50/60Hz
Paper Size	8.5" x 11" LEF
Paper Weight	Binding and Punching up to 80 lb. Cover
Capacity of Ring Bind	2 – 100 sheets
Number of Holes	8.5" x 11" – 21 holes
Ring Supply	8.5" x 11", 50 and 100 sheet, Black or White Supported
Tab Stock	
Stack Capacity	Binding mode: 11 sets
Punching Mode	100 sheets (200 pages in Duplex)
High Capacity Stack (SK5020) Dimensions (WxDxH)	35.4" x 28.7" x 39.3" (900 mm x 730 mm x 1000 mm) Stacker: 264 lbs. (120 kg), Roll-away Cart 33 lbs. (15 kg)
Weight	
Configuration	Console type
Power Supply	120V, 60Hz
Proof Tray	Paper Size: 13" x 19.2" Capacity: 250 sheets
Stack Tray	Paper Size: 13" x 19.2" Paper Weight: 14 lb. Bond – 110 lb. Cover (52 – 300 g/m ²) Stack Capacity: 13" x 19.2": 5,000 sheets B5-Half LT: 2,500 sheets Output Jogger: Standard
Roll Away Cart	Yes (Includes one cart. Additional option cart is available)
Door Lock	Optional (Bracket for Lock is included in the box)
Buffer Pass Unit Dimensions (WxHxD)	13.1" x 28.6" x 38.9" (333 x 727 x 989 mm)
Paper Size	13" x 19.2" – Post Card
Paper Weight	14 lb. Bond – 110 lb. Cover (52 g/m – 300 g/m ²)
Supply Yields	
Toner	
Black	48.5K prints/bottle
Cyan	48.5K prints/bottle
Magenta	48.5K prints/bottle
Yellow	48.5K prints/bottle
Waste Toner Bottle	70K

All specifications are preliminary and subject to change.

RICOH

www.ricoh-usa.com

Ricoh Americas Corporation, Five Dedrick Place, West Caldwell, NJ 07006

Ricoh® and the Ricoh Logo are registered trademarks of Ricoh Company, Ltd. All other trademarks are the property of their respective owners. The content of this document, and the appearance, features and specifications of Ricoh products and services are subject to change from time to time without notice. Products are shown with optional features. While care has been taken to ensure the accuracy of this information, Ricoh makes no representation or warranties about the accuracy, completeness or adequacy of the information contained herein, and shall not be liable for any errors or omissions in these materials. Actual results will vary depending upon use of the products and services, and the conditions and factors affecting performance. The only warranties for Ricoh products and services are as set forth in the express warranty statements accompanying them.

R3280

